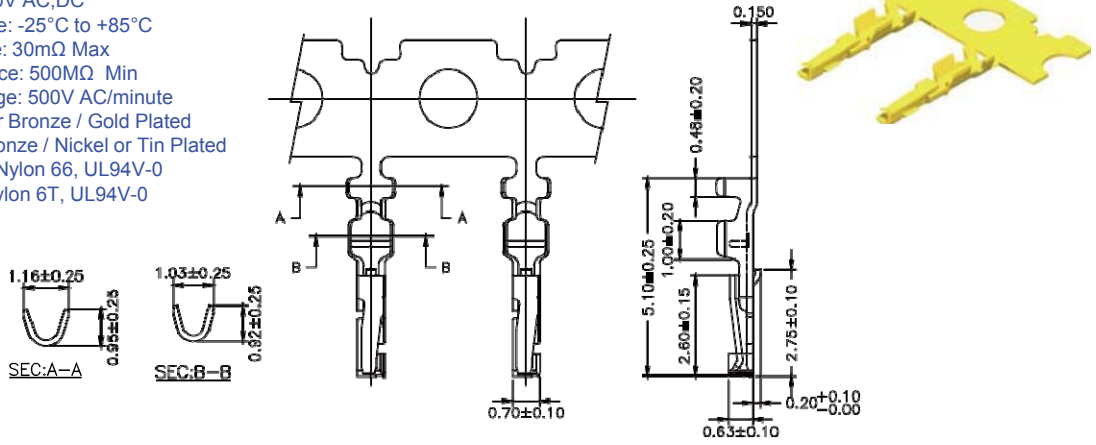


1.0mm Terminal / Housing / Wafer SMT Right Angle Type

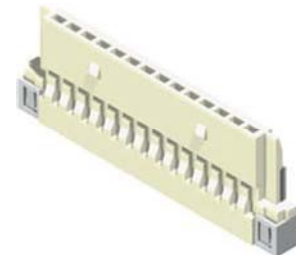
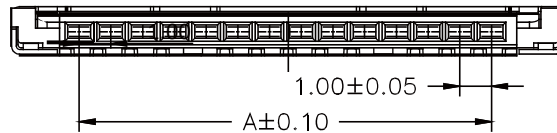
Specifications

Current Rating: 1A AC,DC
Voltage Rating: 100V AC,DC
Temperature Range: -25°C to +85°C
Contact Resistance: 30mΩ Max
Insulation Resistance: 500MΩ Min
Withstanding Voltage: 500V AC/minute
Terminal: Phosphor Bronze / Gold Plated
Shell: Phosphor Bronze / Nickel or Tin Plated
Material: Housing: Nylon 66, UL94V-0
Wafer: Nylon 6T, UL94V-0

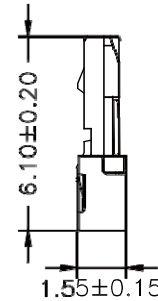
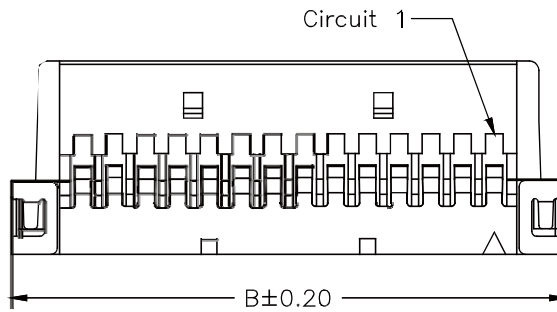


Wire Range	Insulation O.D.	Material	Finish
#28-#32	0.60mm(Max)	Phosphor Bronze	Gold Plated

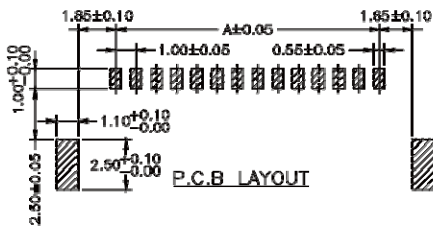
Part No.:1003-T-L



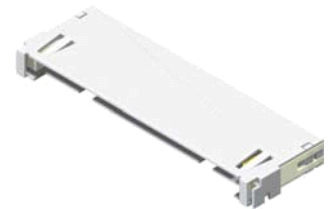
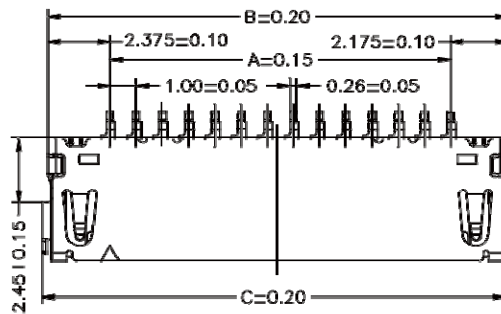
No. of Contacts	Dimensions	
	A	B
8	7.00	11.50
14	13.00	17.50
20	19.00	23.50
30	29.00	33.50



Part No.:1003H-XXW-L



No. of Contacts	Dimensions		
	A	B	C
8	7.00	11.55	11.95
14	13.00	17.55	17.95
20	19.00	23.55	23.95
30	29.00	33.55	33.95



Part No.:1003MR-XXGW-U