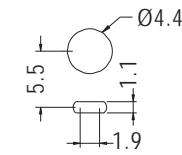
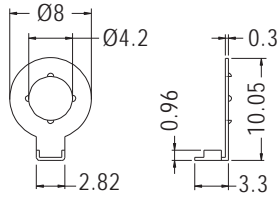


GROUND TERMINAL

- ◆ MATERIAL: NICKEL PLATED BRASS
- ◆ UNIT: mm

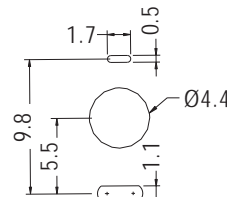
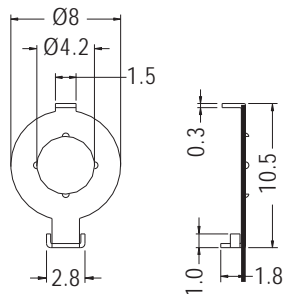


HOLE IN P.C.B

PART NO	PACKAGE
GND-14	1000

GROUND TERMINAL

- ◆ MATERIAL: PHOSPHOR BRONZE TIN PLATED
- ◆ UNIT: mm

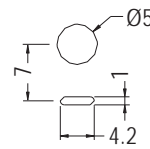
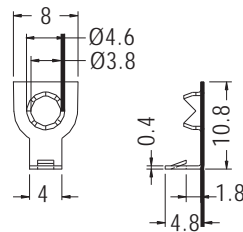


HOLE IN P.C.B

PART NO	PACKAGE
GND-19A	1000

GROUND TERMINAL

- ◆ MATERIAL: TIN PLATED BRASS
- ◆ UNIT: mm

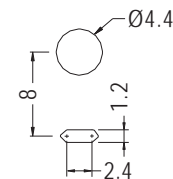
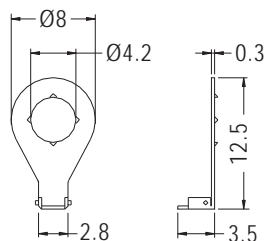


HOLE IN P.C.B

PART NO	PACKAGE
GND-12	1000

GROUND TERMINAL

- ◆ MATERIAL: BRASS WITH TIN PLATED/ NICKEL PLATED
- ◆ UNIT: mm



HOLE IN P.C.B

PART NO	PACKAGE
GND-8	1000