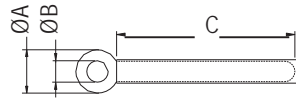


WIRE CLAMP

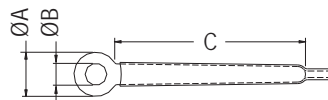


- ◆ METAL MAT'L: STEEL
- ◆ PLASTIC MAT'L: PVC TUBE (UL)
- ◆ COLOR: BLACK
- ◆ UNIT: mm



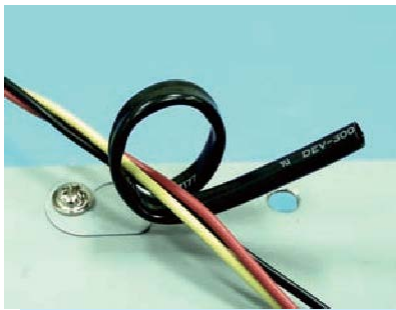
PART NO	A	B	C	PACKAGE
WL3-32T	7.5	3.3	32.0	1000
WL3-52T	7.5	3.3	52.0	
WL3-60T	8.0	3.6	62.0	
WL4-35T	8.5	4.2	35.0	
WL4-50T	8.0	4.1	52.0	
WL4-70T	7.5	4.2	74.5	
WL4-78T	8.0	4.1	78.5	500
WL5-70T	8.4	5.1	60.0	
WL6-78T	10.0	6.0	78.0	

- ◆ METAL MAT'L: STEEL
- ◆ PLASTIC MAT'L: POLYOLEFIN (UL)

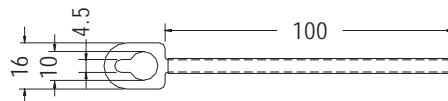


PART NO	A	B	C	PACKAGE
WL3-12H	7.5	3.3	12.0	1000
WL3-32H	7.5	3.3	32.0	
WL3-35H	5.6	3.5	29.9	
WL3-52H	7.5	3.2	52.0	
WL3-60H	8.0	3.6	62.0	
WL4-35H	8.5	4.2	35.0	
WL4-50H	8.0	4.1	52.0	500
WL4-56H	8.0	4.1	48.2	
WL4-70H	7.5	4.2	74.5	
WL4-78H	8.0	4.1	78.5	
WL4-90H	7.5	4.2	94.5	
WL5-70H	8.4	5.1	60.0	
WL6-78H	10.0	6.0	78.0	

WIRE CLAMP



- ◆ METAL MATERIAL: STEEL
- ◆ PLASTIC MAT'L: PVC TUBE (UL)
- ◆ COLOR: BLACK
- ◆ UNIT: mm

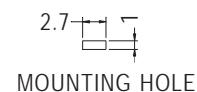
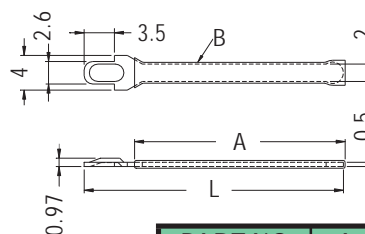


PART NO	PACKAGE
WLC-1	500

WIRE CLAMP



- ◆ METAL MATERIAL: STEEL
- ◆ METAL FINISH: TIN PLATED
- ◆ PLASTIC MAT'L: POLYOLEFIN (UL) / PVC TUBE (UL)
- ◆ COLOR: BLACK
- ◆ UNIT: mm



PART NO	A	B	L	PACKAGE
WLD-30H	24.0	1.5 HEAT SHRINKING	30.0	1000
WLD-50H	47.0		50.0	
WLD-30T	25.0	1.93 PVC TUBE	30.0	
WLD-50T	45.0		50.0	

