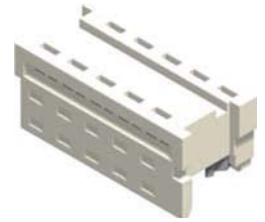
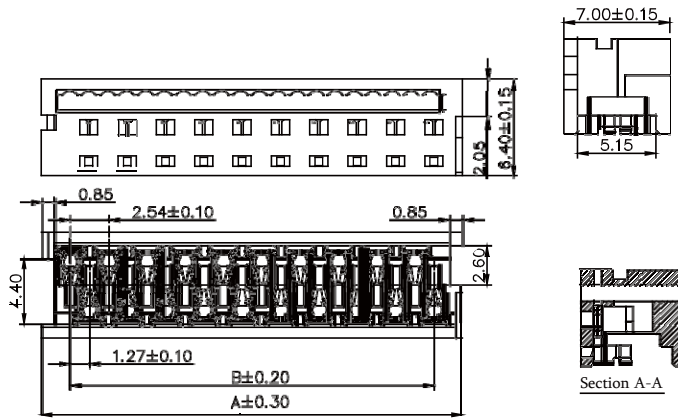




1.27mm Housing IDC

Specifications

- Current Rating: 2.4A AC,DC
- Temperature Range: -40°C to +105°C
- Contact Resistance: 20mΩ Max
- Insulation Resistance: 1000Ω Min
- Withstanding Voltage: 500V AC/minute
- Terminal: Brass / Tin Plated
- Material: P.B.T & Nylon 6T,UL94V-0



No. of Contacts	Dimensions		No. of Contacts	Dimensions	
	A	B		A	B
4	7.59	3.81	16	22.83	19.05
6	10.13	6.35	18	25.37	21.59
8	12.67	8.89	20	27.91	24.13
10	15.21	11.43	22	30.45	26.67
12	17.75	13.97	24	32.99	29.21
14	20.29	16.51	26	35.53	31.75

Part No.:1271IDC-XXTW-L