

TACT SWITCH

6X6 tact switch 90°

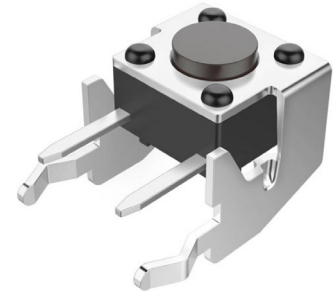
TOPTTEK®
HARDWARE ELECTRONIC COMPONENTS



SPECIFICATION MODEL: SWTA6602-H-X-XXX-X

1	Operating Temperature	-30°C to +85°C
2	Rating	50mA, 12V DC
3	Insulation Resistance	100MΩ min. 100V DC
4	Dielectric Strength	250V AC for 1 min.
5	Contact Resistance	100mΩ max.
6	Life	100.000 or 300.000 Cycles
7	Travel	0.25 ± 0.1mm
8	Operating Force	A:90 J:160 C:250

www.toptek-co.com



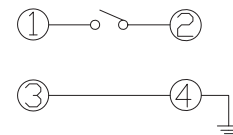
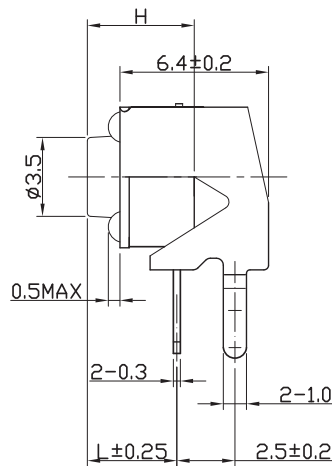
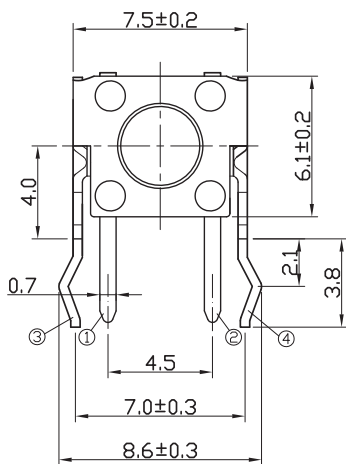
ORDER INFORMATION

S W T A 6 6 0 2 - H - X X X - X - X

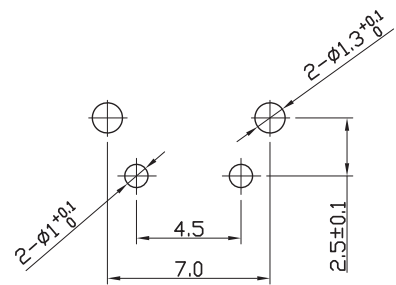
Switch Height
043= (L: 3.15mm)
050= (L: 3.85mm)
055= (L: 4.35mm)
060= (L: 4.85mm)
070= (L: 5.85mm)

Stem Color
B= Black
R= Red
N= Brown

Operating Force
A= 90gf
J= 160gf
C= 250gf



CIRCUIT DIAGRAM



P.C.B LAND DIMENSION