

# TACT SWITCH

6X6 tact switch 90°

**TOPTTEK**<sup>®</sup>  
HARDWARE ELECTRONIC COMPONENTS



## SPECIFICATION MODEL: SWTA6602-A-X-XXX-X

1	Operating Temperature	-30°C to +85°C
2	Rating	50mA, 12V DC
3	Insulation Resistance	100MΩ min. 100V DC
4	Dielectric Strength	250V AC for 1 min.
5	Contact Resistance	100mΩ max.
6	Life	100.000 or 300.000 Cycles
7	Travel	0.25 ± 0.1mm
8	Operating Force	A:90 J:160 C:250

[www.toptek-co.com](http://www.toptek-co.com)



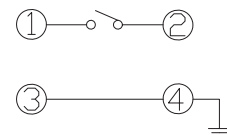
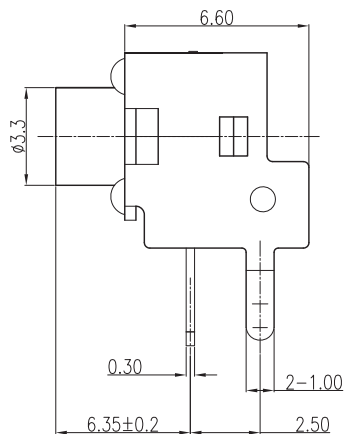
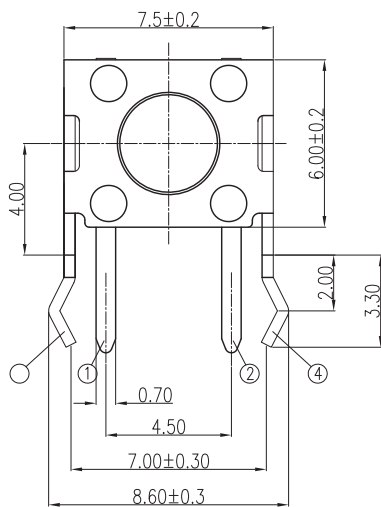
## ORDER INFORMATION

S W T A 6 6 0 2 - A - X X X - X - X

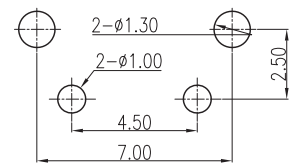
Switch Height  
043= (L: 3.15mm)  
050= (L: 3.85mm)  
055= (L: 4.35mm)  
060= (L: 4.85mm)  
070= (L: 5.85mm)

Stem Color  
B= Black  
R= Red  
N= Brown

Operating Force  
A= 90gf  
J= 160gf  
C= 250gf



CIRCUIT DIAGRAM



P.C.B LAND DIMENSION