

# TACT SWITCH

6X6 tact switch SMD

**TOPTTEK**<sup>®</sup>  
HARDWARE ELECTRONIC COMPONENTS

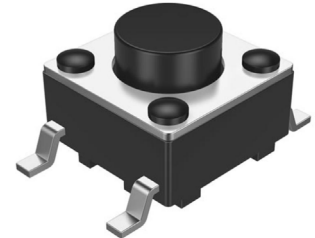


www.toptek-co.com



## SPECIFICATION MODEL: SWTA6647-H-X-XXX-X

1	Operating Temperature	-30°C to +85°C
2	Rating	50mA, 12V DC
3	Insulation Resistance	100MΩ min. 100V DC
4	Dielectric Strength	250V AC for 1 min.
5	Contact Resistance	100mΩ max.
6	Life	50,000, 100,000 or 300,000 Cycles
7	Travel	0.25 ± 0.1mm
8	Operating Force	D:70 A:90 E:130 J:160 C:250 G:320 H:400 I:520gf



## ORDER INFORMATION

S W T A 6 6 4 7 - H - X X X - X - X

Switch Height  
043= 4.3mm  
050= 5.0mm  
070= 7.0mm  
073= 7.3mm  
095= 9.5mm  
113= 13.0mm  
117= 17.0mm

Stem Color  
B= Black  
W= White  
R= Red  
D= Dark Gray  
N= Brown  
S= Salmon

Operating Force  
D= 70gf  
A= 90gf  
E= 130gf  
J= 160gf  
C= 250gf  
G= 320gf  
H= 400gf  
I= 520gf

