

Rocker Switch



RoHS

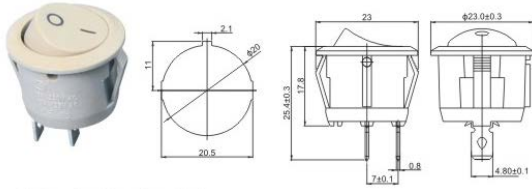
Rating: 10A 125VAC ; 6A 250VAC
 Contact Resistance: 35m Ω max
 Insulation Resistance: 500VDC 100M Ω min

Dielectric Strength: 1500VAC, 1 Minute
 Operating Temperature: -25°C~ +85°C
 Electrical Life: ≥ 10,000 Cycles

TOPTEK®
 HARDWARE ELECTRONIC MANUFACTURER

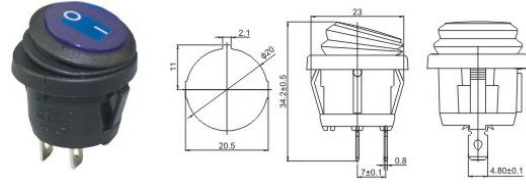


A-TOP1-5-101/111



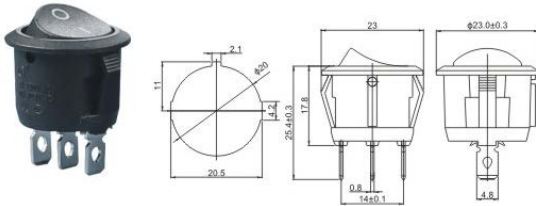
A-TOP1-5-101 ON-OFF
 A-TOP1-5-111 OFF-(ON)

A-TOP1-5-101W



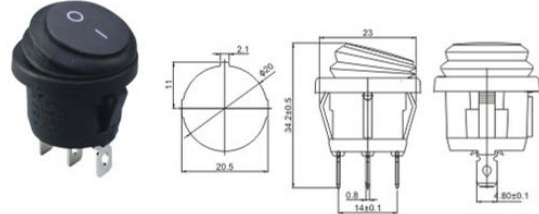
A-TOP1-5-101W ON-OFF

A-TOP1-5-102



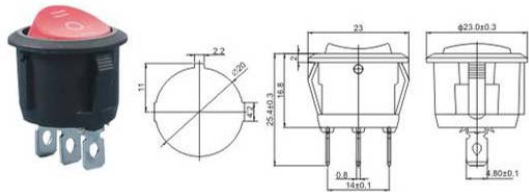
A-TOP1-5-102 ON-ON

A-TOP1-5-102W/103W



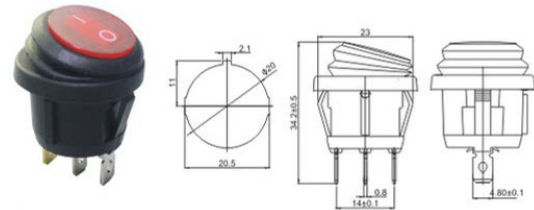
A-TOP1-5-102W ON-ON
 A-TOP1-5-103W ON-OFF-ON

A-TOP1-5-103 / 113 / 123



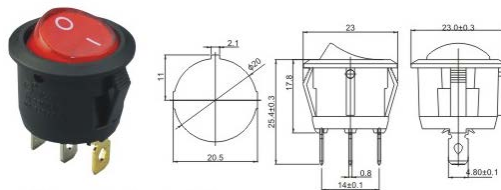
A-TOP1-5-103 ON-OFF-ON
 A-TOP1-5-113 ON-OFF-(ON)
 A-TOP1-5-123 (ON)-OFF-(ON)

A-TOP1-5-101NW



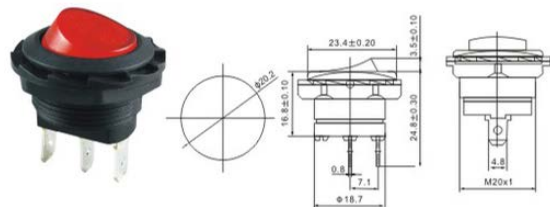
A-TOP1-5-101NW ON-OFF

A-TOP1-5-101N



A-TOP1-5-101N ON-OFF

A-TOP1-7-101Y / 101NY



A-TOP1-7-101Y ON-OFF 2P
 A-TOP1-7-101NY ON-OFF 3P

