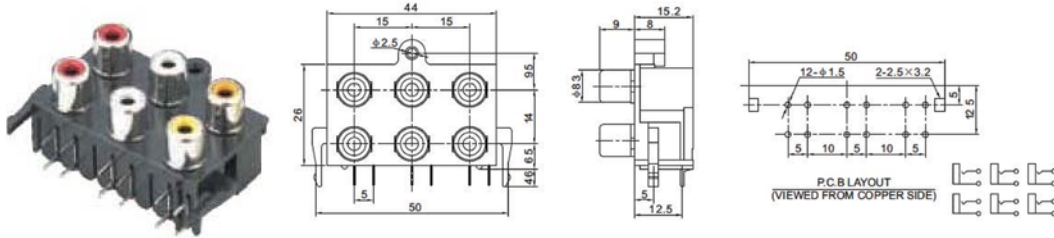


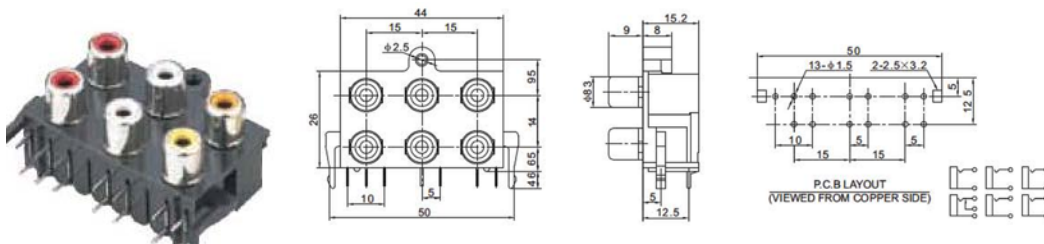
Contact Resistance:  $\leq 0.03 \Omega$   
 Insulation Resistance:  $\geq 100M \Omega$   
 Withstand Voltage: 500V, AC/minute  
 Temperature Range:  $-25^{\circ}\text{C} \sim +70^{\circ}\text{C}$

Rated Load: 30V DC 0.3A  
 Insertion and Extraction Force: 3N ~ 30N  
 Terminal Strength:  $\geq 20\text{N}$   
 Life:  $\geq 5000$  Cycles

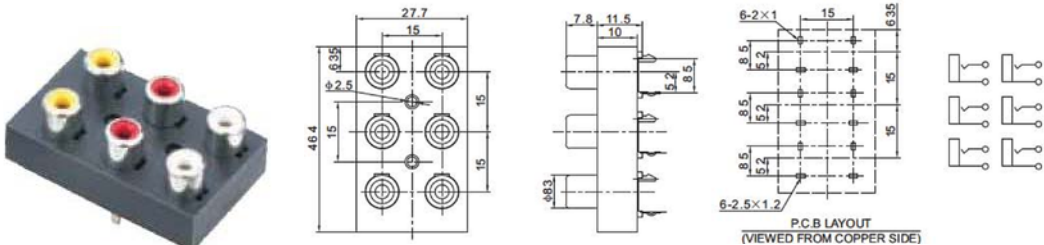
## R-614



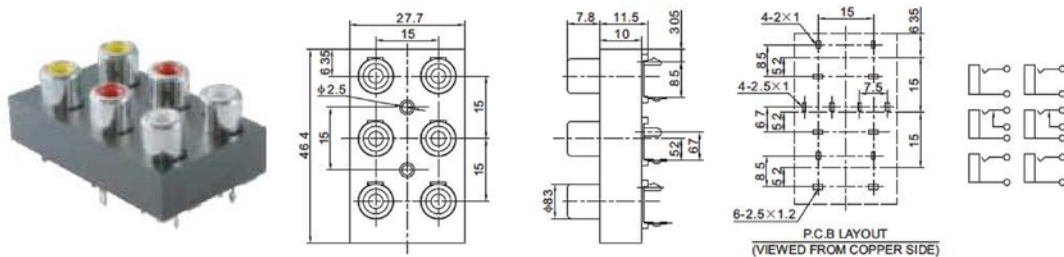
## R-614K



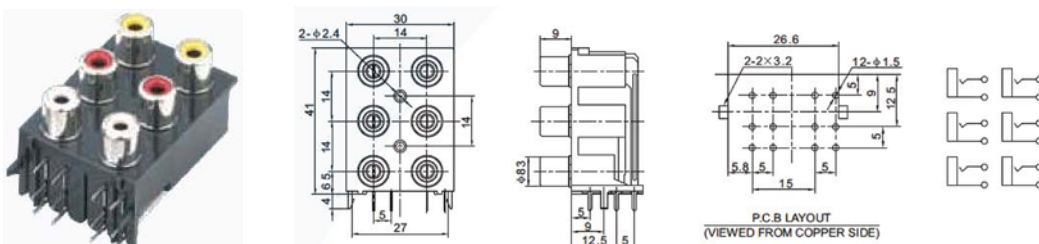
## R-615H



## R-615HK



## R-616



7  
\*  
39

