

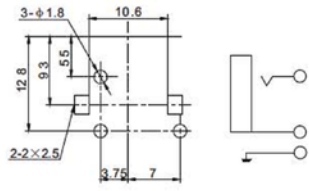
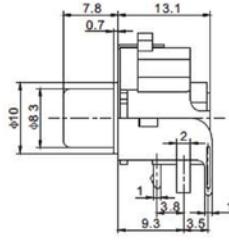
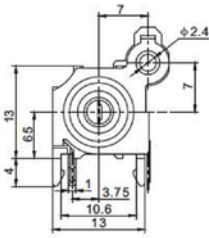
# CONNECTOR MANUFACTURERS



Contact Resistance:  $\leq 0.03 \Omega$   
 Insulation Resistance:  $\geq 100M \Omega$   
 Withstand Voltage: 500V, AC/minute  
 Temperature Range:  $-25^{\circ}C \sim +70^{\circ}C$

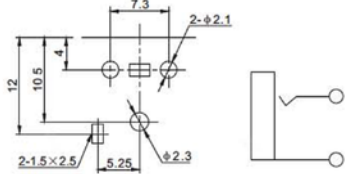
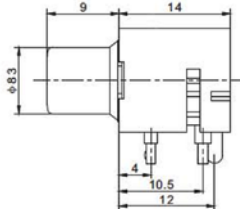
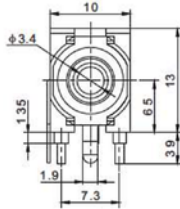
Rated Load: 30V DC 0.3A  
 Insertion and Extraction Force: 3N ~ 30N  
 Terminal Strength:  $\geq 20N$   
 Life:  $\geq 5000$  Cycles

## R-108C



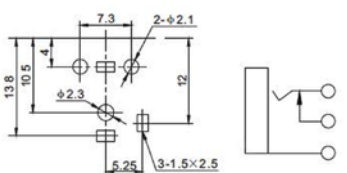
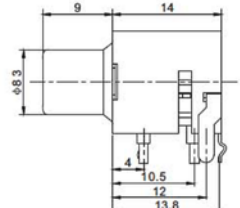
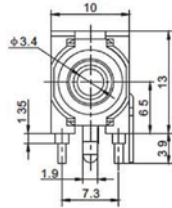
P.C.B LAYOUT  
(VIEWED FROM COPPER SIDE)

## R-109



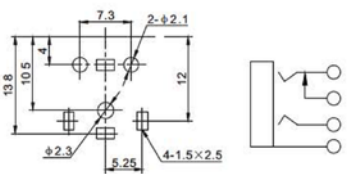
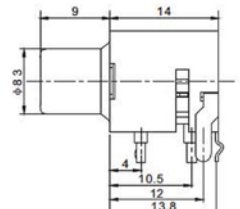
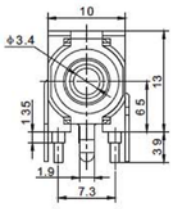
P.C.B LAYOUT  
(VIEWED FROM COPPER SIDE)

## R-109K



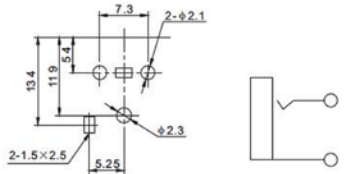
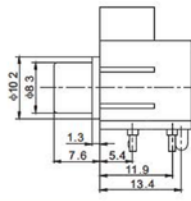
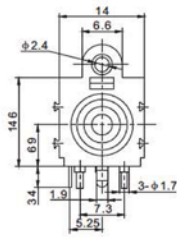
P.C.B LAYOUT  
(VIEWED FROM COPPER SIDE)

## R-109K1



P.C.B LAYOUT  
(VIEWED FROM COPPER SIDE)

## R-113



P.C.B LAYOUT  
(VIEWED FROM COPPER SIDE)

