

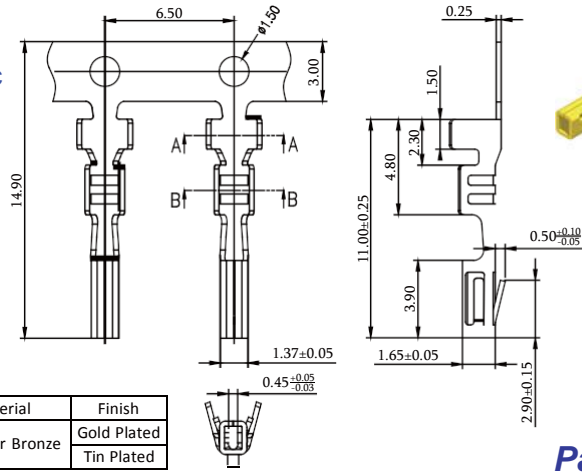
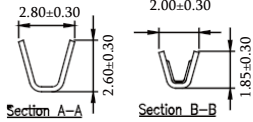
## 2.54mm Terminal / Housing / Wafer SMT & R/A & Straight Type

### Specifications

Current Rating: 3A AC,DC  
Voltage Rating: 675V AC,DC  
Temperature Range: Housing: -25°C to +105°C  
Wafer: -55°C to +125°C

Contact Resistance: 20mΩ Max Insulation Resistance: 1000MΩ Min Withstanding Voltage: 1000V AC/minute Terminal: Brass / Tin Plated

Material: Housing: Nylon 66, UL94V-2  
Wafer: LCP, UL94V-0

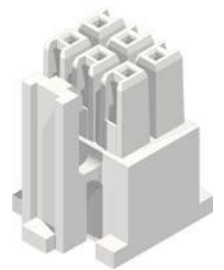
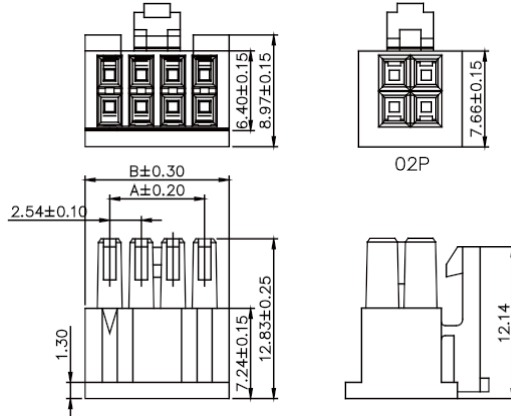


Part No.	Wire Range	Insulation O.D.	Material	Finish
2553-TGP-L	#20-#24	1.55mm(Max)	Phosphor Bronze	Gold Plated
2553-TTP-L				Tin Plated

Part No.:2553-T-L

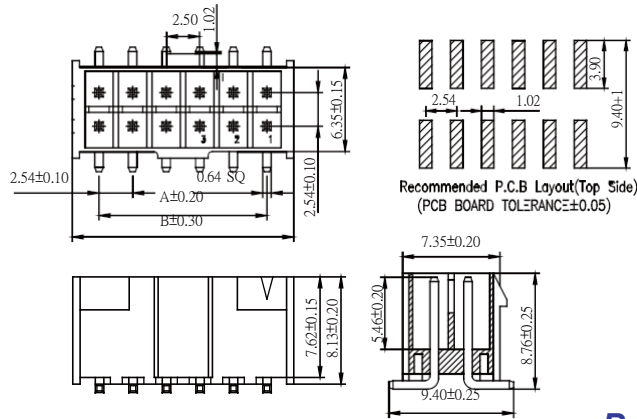
Housing Wafer Terminal

No. of Contacts	Dimensions		No. of Contacts	Dimensions	
	A	B		A	B
2x2	2.54	8.26	2x14	33.02	36.96
2x3	5.08	9.02	2x15	35.56	39.50
2x4	7.62	11.56	2x16	38.10	42.04
2x5	10.16	14.10	2x17	40.64	44.58
2x6	12.70	16.64	2x18	43.18	47.12
2x7	15.24	19.18	2x19	45.72	49.66
2x8	17.78	21.72	2x20	48.26	52.20
2x9	20.32	24.26	2x21	50.80	54.74
2x10	22.86	26.80	2x22	53.34	57.28
2x11	25.40	29.34	2x23	55.88	59.82
2x12	27.94	31.88	2x24	58.42	62.36
2x13	30.48	34.42	2x25	60.96	64.90

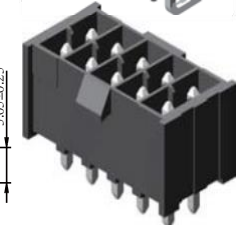
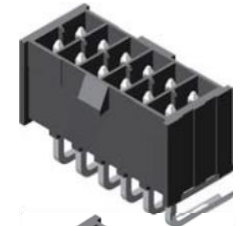
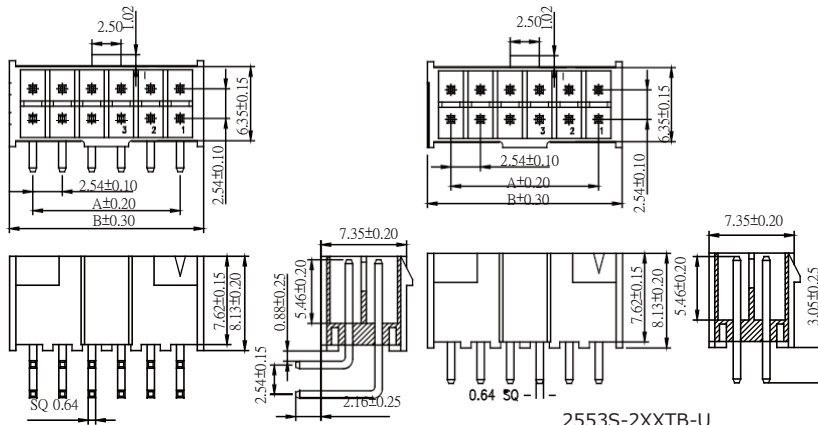


Part No.:2553H-2XXW-L

No. of Contacts	Dimensions	
	A	B
2x2	2.54	6.60
2x3	5.08	9.14
2x4	7.62	11.68
2x5	10.16	14.22
2x6	12.70	16.76
2x7	15.24	19.30
2x8	17.78	21.84
2x9	20.32	24.38
2x10	22.86	26.92
2x11	25.40	29.46
2x12	27.94	32.00
2x13	30.48	34.54
2x14	33.02	37.08
2x15	35.56	39.62
2x16	38.10	42.16
2x17	40.64	44.70
2x18	43.18	47.24
2x19	45.72	49.78
2x20	48.26	52.32
2x21	50.80	54.86
2x22	53.34	57.40
2x23	55.88	59.94
2x24	58.42	62.48
2x25	60.96	65.02



Part No.:2553M-2XXTB-U



2553R-2XXTB-U

2553S-2XXTB-U

Part No.:2553R/S-2XXTB-U

