

# ▶ TOGGLE SWITCH

Toggle Switch

**TOPTTEK®**

HARDWARE ELECTRONIC COMPONENTS



RoHS 2002/95/EC

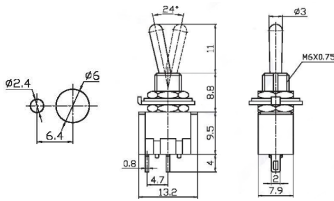
**Specifications**

Rating: 6A 125V AC | 3A 250V AC | Contact Resistance: 20mΩ Max | Insulation Resistance: 500VDC 1000M Ω min | Dielectric Strength: 1500V AC for one minute | Operation Temperature: -25°C to +85°C | Electrical Life: ≥10,000 Cycles



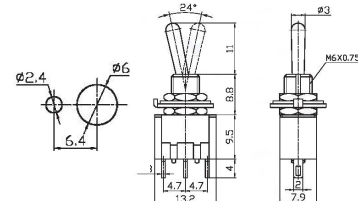
www.toptek-co.com

**TP-101-111**



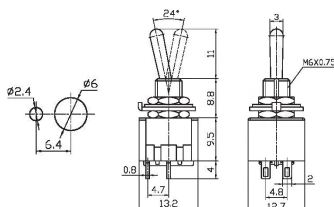
TP-101 ON-OFF  
TP-111 OFF-(ON)  
SPST 2P

**TP-102-103-112-113-123**



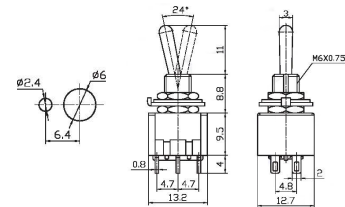
TP-102 ON-ON  
TP-103 ON-OFF-ON  
TP-112 ON-(ON)  
TP-113 ON-OFF-(ON)  
TP-123 (ON)-OFF-(ON)  
SPDT 3P

**TP-201-211**



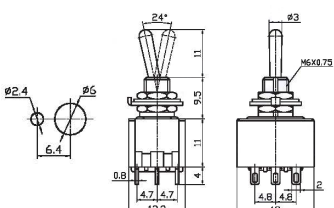
TP-201 ON-OFF  
TP-211 OFF-(ON)  
DPST 4P

**TP-202-203-2033-212-213-223**



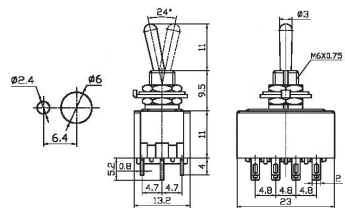
TP-202 ON-ON  
TP-203 ON-OFF-ON  
TP-2033 ON-(ON)  
TP-212 ON-(ON)  
TP-213 ON-OFF-(ON)  
TP-223 (ON)-OFF-(ON)  
DPDT 6P

**TP-302-303**



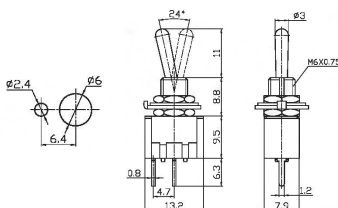
TP-302 ON-ON  
TP-303 ON-OFF-ON  
3PDT 9P

**TP-402-403**



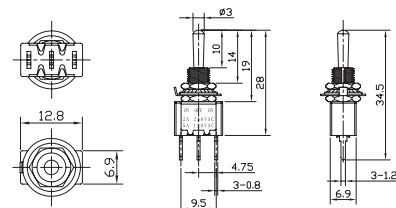
TP-402 ON-ON  
TP-403 ON-OFF-ON  
4PDT 12P

**TP-101-111-A2**



TP-101-A2 ON-OFF  
TP-111-A2 OFF(ON)  
SPST 2P

**TP-102-103-112-113-123-A2**



TP-102-A2 ON-ON  
TP-103-A2 ON-OFF-ON  
TP-112-A2 ON-(ON)  
TP-113-A2 ON-OFF-(ON)  
TP-123-A2 (ON)-OFF-(ON)  
SPDT 3P