

TACT SWITCH

12X12 straight tact switch w/o pilot

TOPTTEK[®]

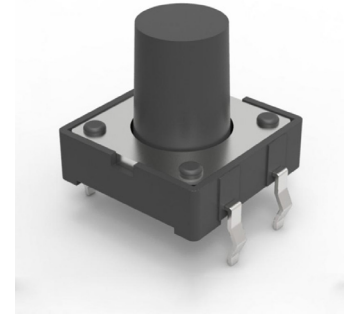
HARDWARE ELECTRONIC COMPONENTS



SPECIFICATION MODEL: SWTA2201-H-X-XXX-X

www.toptek-co.com

1	Operating Temperature	-30°C to +85°C
2	Rating	50mA, 12V DC
3	Insulation Resistance	100MΩ min. 100V DC
4	Dielectric Strength	250V AC for 1 min.
5	Contact Resistance	100mΩ max.
6	Life	100.000 or 200.000 Cycles
7	Travel	0.35 ± 0.1mm
8	Operating Force	J:160 C:250



ORDER INFORMATION

S W T A 2 2 0 1 - H - X X X - X - X

Switch Height
 043= 4.3mm
 050= 5.0mm
 060= 6.0mm
 070= 7.0mm

Stem Color
 B= Black
 R= Red
 Y= Yellow
 N= Brown

Operating Force
 J= 160gf
 C= 250gf

