

SWITCH LIGHT LED

8.5X8.5 Led type

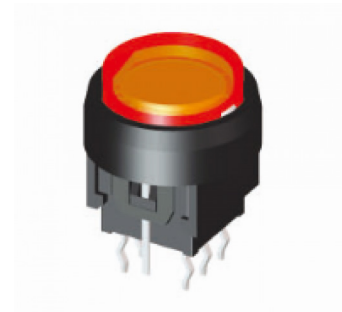
TOPTTEK[®]
HARDWARE ELECTRONIC COMPONENTS



SPECIFICATION MODEL: T8507-X-X

| | | |
|---|-----------------------|-----------------------------|
| 1 | Operating Temperature | -25°C to +85°C |
| 2 | Rating | 50mA, 30V DC |
| 3 | Insulation Resistance | 100MΩ min. 250V DC |
| 4 | Dielectric Strength | AC250V (50-60Hz) for 1 min. |
| 5 | Contact Resistance | 500mΩ max. |
| 6 | Life | 100.000 Cycles Min |
| 7 | Operating Force | F:200gf ± 50gf |
| 8 | Travel | 0.25 ± 0.1mm |

www.toptek-co.com

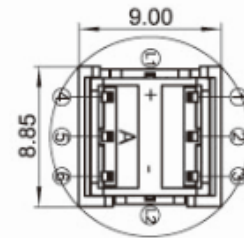
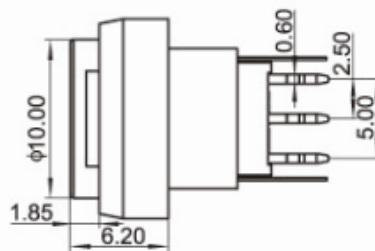
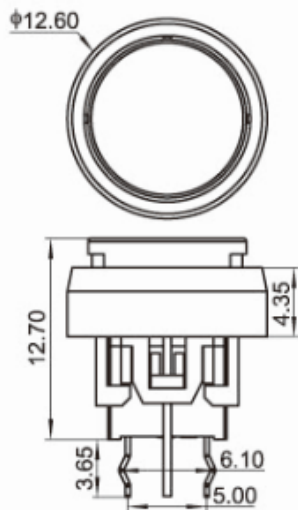


ORDER INFORMATION

T 8 5 0 7 - X - F

Led Color
N= Without
R= Red
Y= Yellow
G= Green
U= Blue
W= White
O= Orange
R/U= Red/Blue

Operating Force
F= 200gf



| Color | VR | IF | Recommended Operating | IF | |
|--------|------|------|-----------------------|------|------|
| | | | | Nom | Max |
| White | DC5V | 20mA | 20mA | 3.0V | 3.6V |
| Red | DC5V | 20mA | 20mA | 1.7V | 2.4V |
| Yellow | DC5V | 20mA | 20mA | 1.9V | 2.4V |
| Blue | DC5V | 20mA | 20mA | 3.0V | 3.6V |
| Green | DC5V | 20mA | 20mA | 1.9V | 2.4V |

