

# ▶ TOGGLE SWITCH

Toggle Switch

**TOPTTEK®**

HARDWARE ELECTRONIC COMPONENTS



RoHS  
2002/95/EC

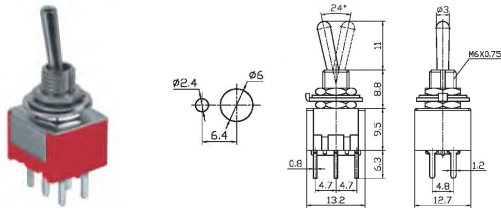
**Specifications**

Rating: 6A 125V AC; 3A 250V AC | Contact Resistance: 20mΩ Max | Insulation Resistance: 500VDC 1000M Ω min | Dielectric Strength: 1500V AC for one minute | Operation Temperature: -25°C to +85°C | Electrical Life: ≥10,000 Cycles



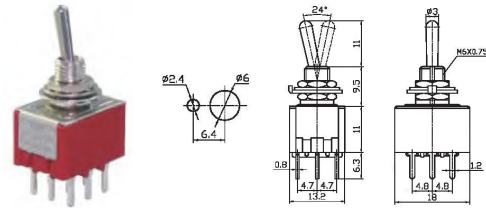
www.toptek-co.com

**TP-202-212-203-213-223-A2**



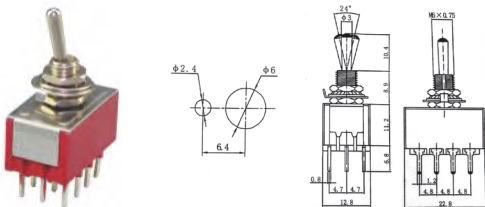
TP-202-A2 ON-ON  
TP-212-A2 ON-(ON)  
TP-203-A2 ON-OFF-ON  
TP-213-A2 ON-OFF-(ON)  
TP-223-A2 (ON)-OFF-(ON)  
DPDT 6P

**TP-302-303-A2**



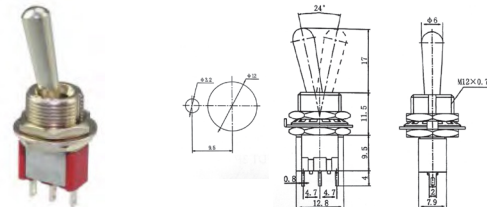
TP-302-A2 ON-ON  
TP-303-A2 ON-(ON)  
3PDT 9P

**TP-402-403-A2**



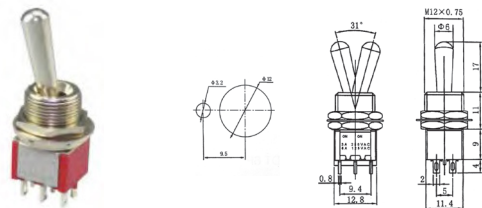
TP-402-A2 ON-ON  
TP-403-A2 ON-OFF-ON  
4PDT 12P

**TP-102-103-L1**



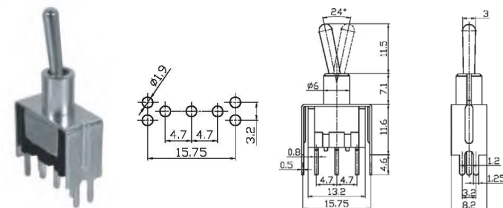
TP-102-L1 ON-ON  
TP-103-L1 ON-OFF-ON  
SPDT 3P

**TP-202-203-L1**



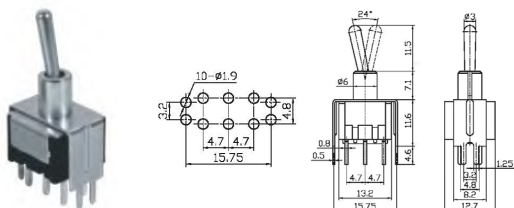
TP-202-L1 ON-ON  
TP-203-L1 ON-OFF-ON  
DPDT 6P

**TP-102-112-103-113-123-A2T**



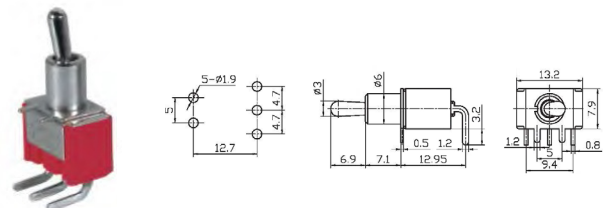
TP-102-A2T ON-ON  
TP-112-A2T ON-(ON)  
TP-103-A2T ON-OFF-ON  
TP-113-A2T ON-OFF-(ON)  
TP-123-A2T (ON)-OFF-(ON)  
SPDT 3P

**TP-202-212-203-213-223-A2T**



TP-202-A2T ON-ON  
TP-212-A2T ON-(ON)  
TP-203-A2T ON-OFF-ON  
TP-213-A2T ON-OFF-(ON)  
TP-223-A2T (ON)-OFF-(ON)  
DPDT 6P

**TP-102-103-112-113-123-C3**



TP-102-C3 ON-ON  
TP-103-C3 ON-OFF-ON  
TP-112-C3 ON-(ON)  
TP-113-C3 ON-OFF-(ON)  
TP-123-C3 (ON)-OFF-(ON)  
SPDT 3P