

# ▶ TOGGLE SWITCH

## Toggle Switch

**TOPTTEK®**

HARDWARE ELECTRONIC COMPONENTS

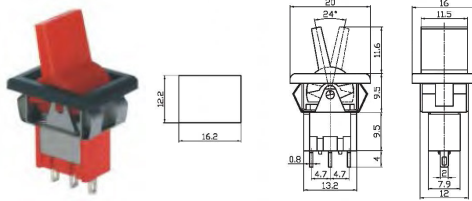


### Specifications

Rating TPA: 6A 125V AC, 3A 250V AC | Rating T3C: 10A 125V AC, 6A 250V AC / 15A 125V AC ; 10A 250V AC / 20A 125V AC, 15A 250V AC | Contact Resistance: 50mΩ Max | Insulation Resistance: 500VDC 1000M Ω min | Dielectric Strength: 1500V AC for one minute | Operation Temperature: -25°C to +85°C | Electrical Life: ≥ 10,000 Cycles

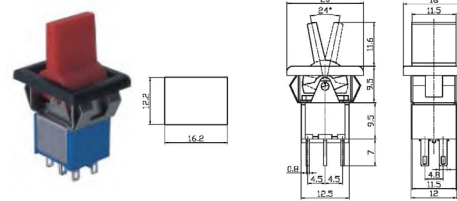
www.toptek-co.com

### TPA-102-112-103-113-123-F1



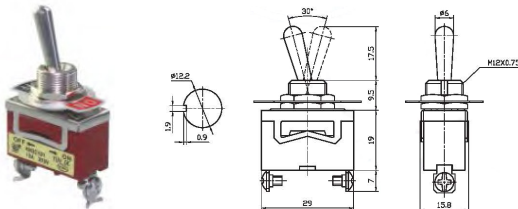
TPA-102-F1 ON-ON      TPA-113-F1 ON-OFF-(ON)  
 TPA-112-F1 ON-(ON)    TPA-123-F1 (ON)-OFF-(ON)  
 TPA-103-F1 ON-OFF-ON    SPDT 3P

### TPA-202-212-203-213-223-F1



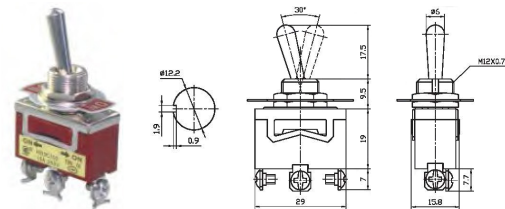
TPA-202-F1 ON-ON      TPA-213-F1 ON-OFF-(ON)  
 TPA-212-F1 ON-(ON)    TPA-223-F1 (ON)-OFF-(ON)  
 TPA-203-F1 ON-OFF-ON    DPDT 6P

### T3C-101-111



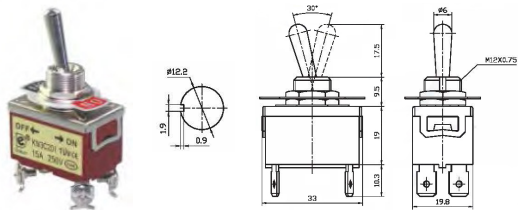
T3C-101 ON-OFF  
 T3C-111 OFF-(ON)  
 SPST 2P

### T3C-102-112-103-113-123



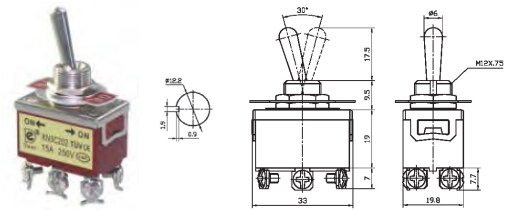
T3C-102 ON-ON      T3C-113 ON-OFF-(ON)  
 T3C-112 ON-(ON)    T3C-123 (ON)-OFF-(ON)  
 T3C-103 ON-OFF-ON    SPDT 3P

### T3C-201-211



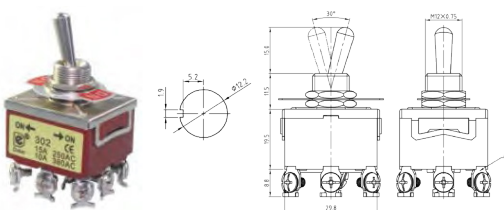
T3C-201 ON-OFF  
 T3C-211 OFF-(ON)  
 DPST 4P

### T3C-202-212-203-213-223



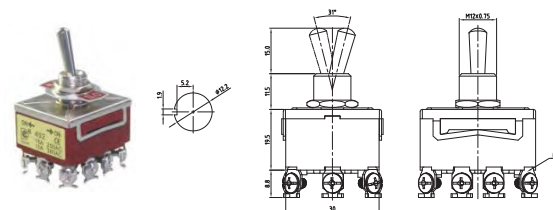
T3C-202 ON-ON      T3C-213 ON-OFF-(ON)  
 T3C-212 ON-(ON)    T3C-223 (ON)-OFF-(ON)  
 T3C-203 ON-OFF-ON    DPDT 6P

### T3C-302-303



T3C-302 ON-ON  
 T3C-303 ON-OFF-ON  
 3PDT 9P

### T3C-402-403



T3C-402 ON-ON  
 T3C-403 ON-OFF-ON  
 4PDT 10P