

TACT SWITCH

12X12 SMD tact switch w/o pilot

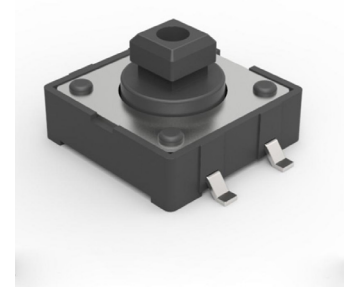
TOPTTEK[®]
HARDWARE ELECTRONIC COMPONENTS



SPECIFICATION MODEL: SWTA2201-M-X-XXX-X

1	Operating Temperature	-30°C to +85°C
2	Rating	50mA, 12V DC
3	Insulation Resistance	100MΩ min. 100V DC
4	Dielectric Strength	250V AC for 1 min.
5	Contact Resistance	100mΩ max.
6	Life	100.000 or 200.000 Cycles
7	Travel	0.35 ± 0.1mm
8	Operating Force	J:160 C:320

www.toptek-co.com



ORDER INFORMATION

S W T A 2 2 0 1 - M - X X X - X - X

Switch Height
043= 4.3mm
050= 5.0mm
060= 6.0mm
070= 7.0mm

Stem Color
B= Black
R= Red
N= Brown

Operating Force
J= 160gf
C= 320gf

