

Rocker Switch

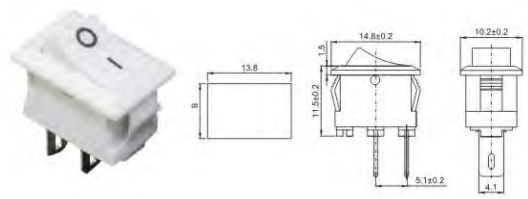


Rating: 6A 125VAC ; 3A 250VAC
 Contact Resistance: 35m Ω max
 Insulation Resistance: 500VDC 100M Ω min

Dielectric Strength: 1500VAC, 1 Minute
 Operating Temperature: -25°C~ +85°C
 Electrical Life: ≥ 10,000 Cycles

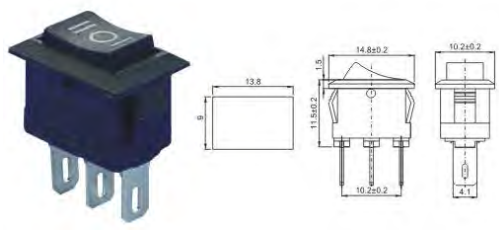


A-TOP5-101



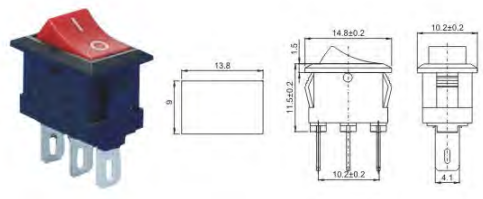
A-TOP5-101 ON-OFF

A-TOP5-103



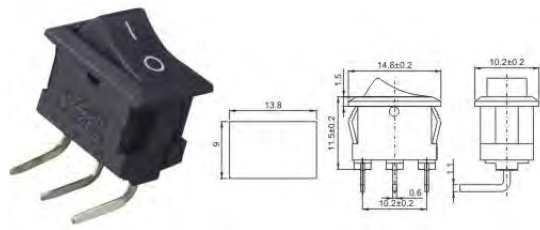
A-TOP5-103 ON-OFF-ON

A-TOP5-102



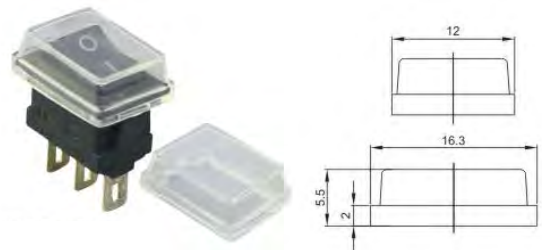
A-TOP5-102 ON-ON

A-TOP5-101L / 102L



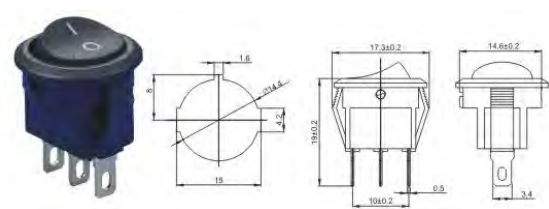
A-TOP5-101 L ON-OFF 2P
 A-TOP5-102 L ON-ON 3P

A-TOP5-1510



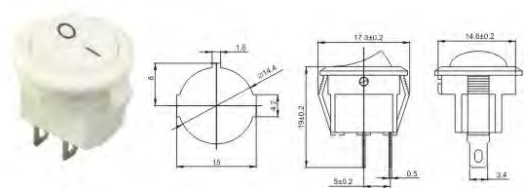
A-TOP5-1510

A-TOP5-2-102



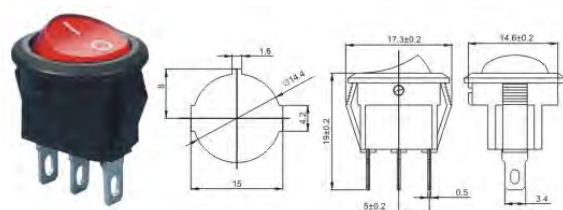
A-TOP5-2-102 ON-ON

A-TOP5-2-101



A-TOP5-2-101 ON-OFF

A-TOP5-2-101N



A-TOP5-2-101N ON-OFF

14
*
23

