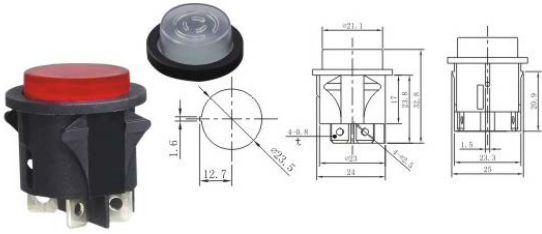
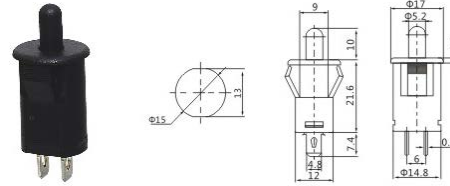


## T-TOP-16N-2



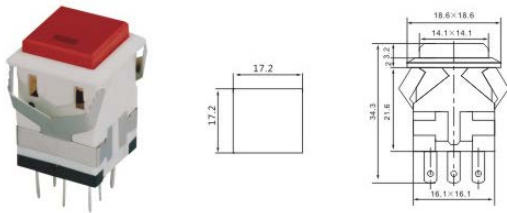
T-TOP-16N-2 ON-OFF With Lamp  
WPC-18 waterproof cover

## T-TOP-29B



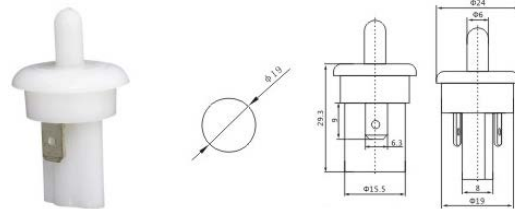
T-TOP-29B OFF-(ON)  
3A 250VAC

## T-TOP-21/22



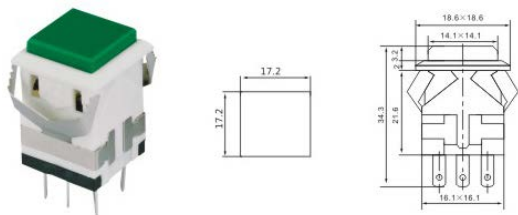
T-TOP-21 ON-ON  
T-TOP-22 ON-(ON)  
3A 250VAC; 6A 250VAC (with LED)

## T-TOP-35B



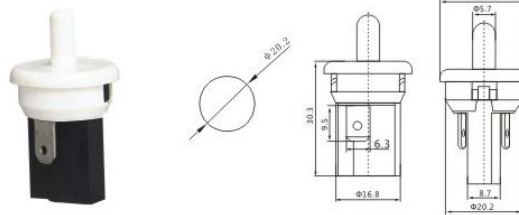
T-TOP-35B OFF-(ON)  
3A 125VAC; 1A 250VAC

## T-TOP-23/24



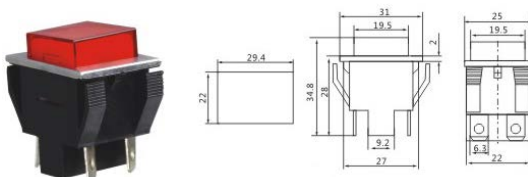
T-TOP-23 ON-ON  
T-TOP-24 ON-(ON)  
3A 250VAC; 6A 250VAC

## T-TOP-35C



T-TOP-35C ON-(OFF)  
3A 125VAC; 1A 250VAC

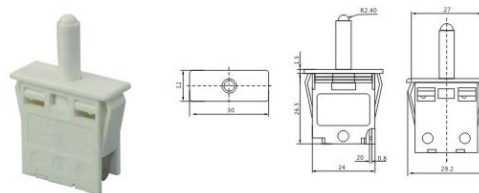
## T-TOP-21/21N/22/22N



T-TOP-21 ON-OFF  
T-TOP-21N ON-OFF (With Lamp)  
T-TOP-22 OFF-(ON)  
T-TOP-22N OFF-(ON) (With Lamp)  
15A 250VAC; DPST 4P

www.toptek-co.com

## T-TOP-37



T-TOP-37 ON-(OFF)  
3A 125VAC; 0.5A 250VAC

14  
\*  
71

info@toptek-co.com