

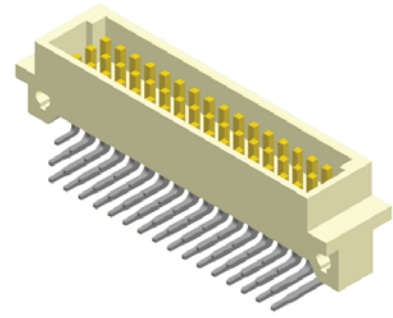
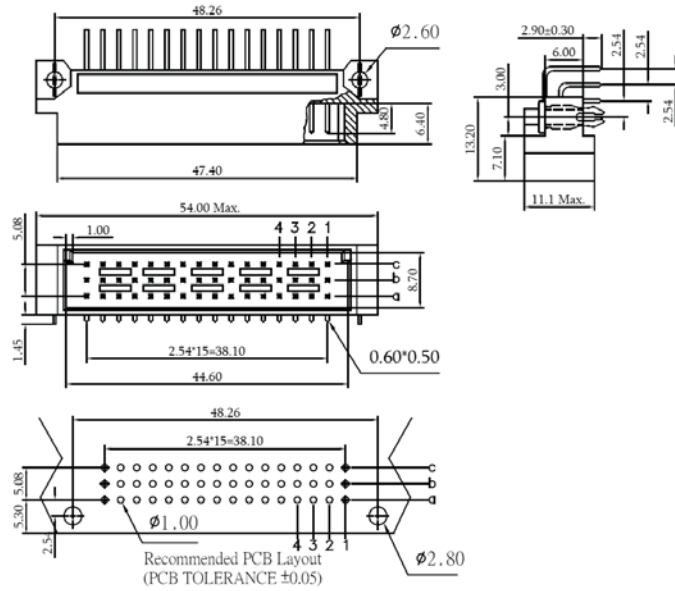
## DIN 41612 Short Body C Type Male

### SPECIFICATION

Current Rate: 2 AMP  
 Insulation Resistance: 1000MΩ Min.  
 Contact Resistance: 30mΩ Max.  
 Dielectric Voltage: 1000V AC for one minute  
 Operation Temperature: -55°C to +105°C

### MATERIAL

Insulator: Polyester, UL 94V-0  
 ©Standard: PBT  
 Contact Pin: Brass



No. of Contacts	Rows/Positions With Contacts	Pitch
48	a+b+c	2.54mm
32A	a+c	
32B	a+b	
16	a	5.08mm Half-Loaded
24	a+b+c All Even No.	
16	a+c All Even No.	

Part No.: DINSR-M3XX-L

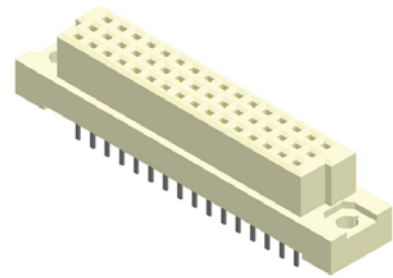
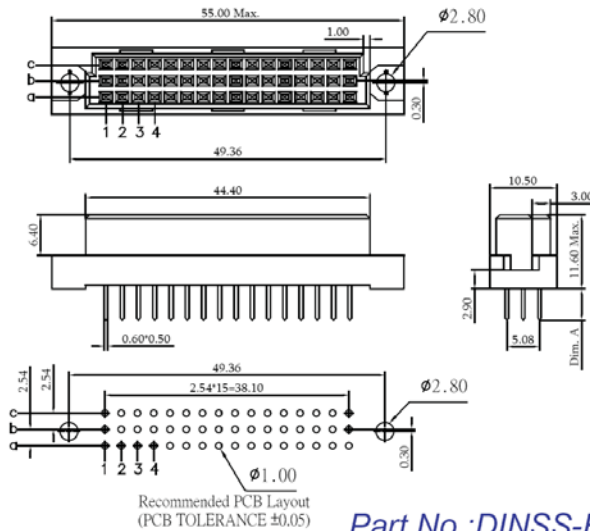
## DIN 41612 Short Body C Type Female

### SPECIFICATION

Current Rate: 2 AMP  
 Insulation Resistance: 1000MΩ Min.  
 Contact Resistance: 30mΩ Max.  
 Dielectric Voltage: 1000V AC for one minute  
 Operation Temperature: -55°C to +105°C

### MATERIAL

Insulator: Polyester, UL 94V-0  
 ©Standard: PBT  
 Contact Pin: Phosphor Bronze



No. of Contacts	Rows/Positions With Contacts	Pitch
48	a+b+c	2.54mm
32A	a+c	
32B	a+b	
16	a	5.08mm Half-Loaded
24	a+b+c All Even No.	
16	a+c All Even No.	

Part No.: DINSS-F3XX-L

## ORDER INFORMATION

