

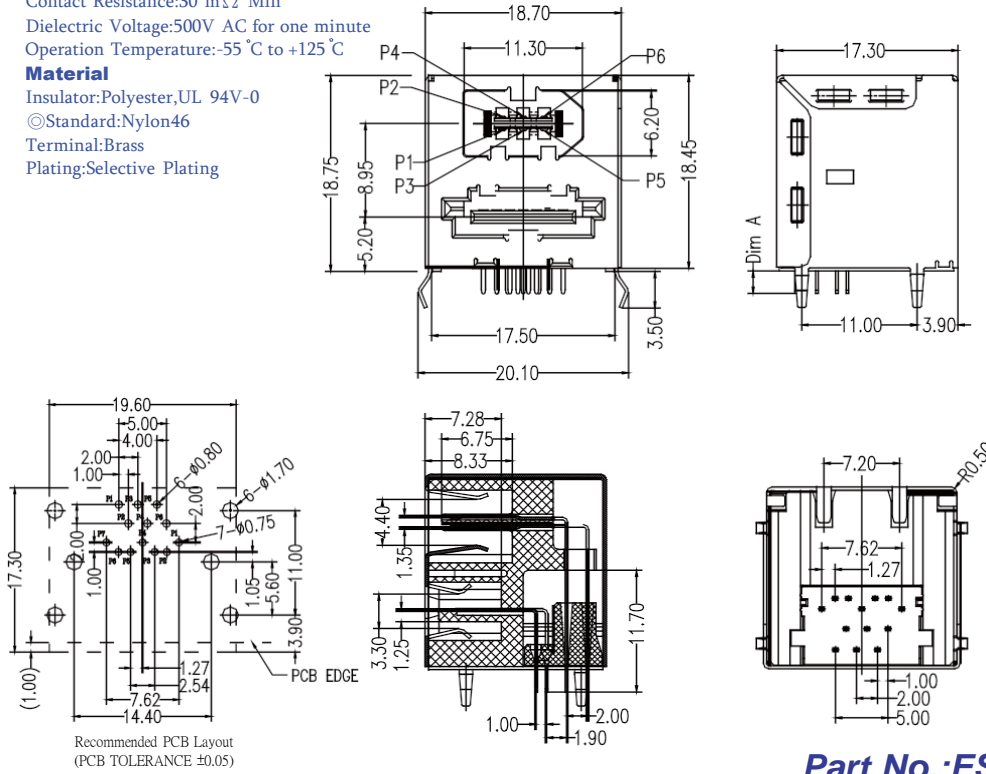
## E.SATA Conn. Series

### Specifications

Current Rate:1.5 AMP  
Insulation Resistance:eSATA 1000M $\Omega$  Max.  
1394 100M $\Omega$  Max.  
Contact Resistance:30 m $\Omega$  Min  
Dielectric Voltage:500V AC for one minute  
Operation Temperature:-55 °C to +125 °C

### Material

Insulator:Polyester,UL 94V-0  
©Standard:Nylon46  
Terminal:Brass  
Plating:Selective Plating



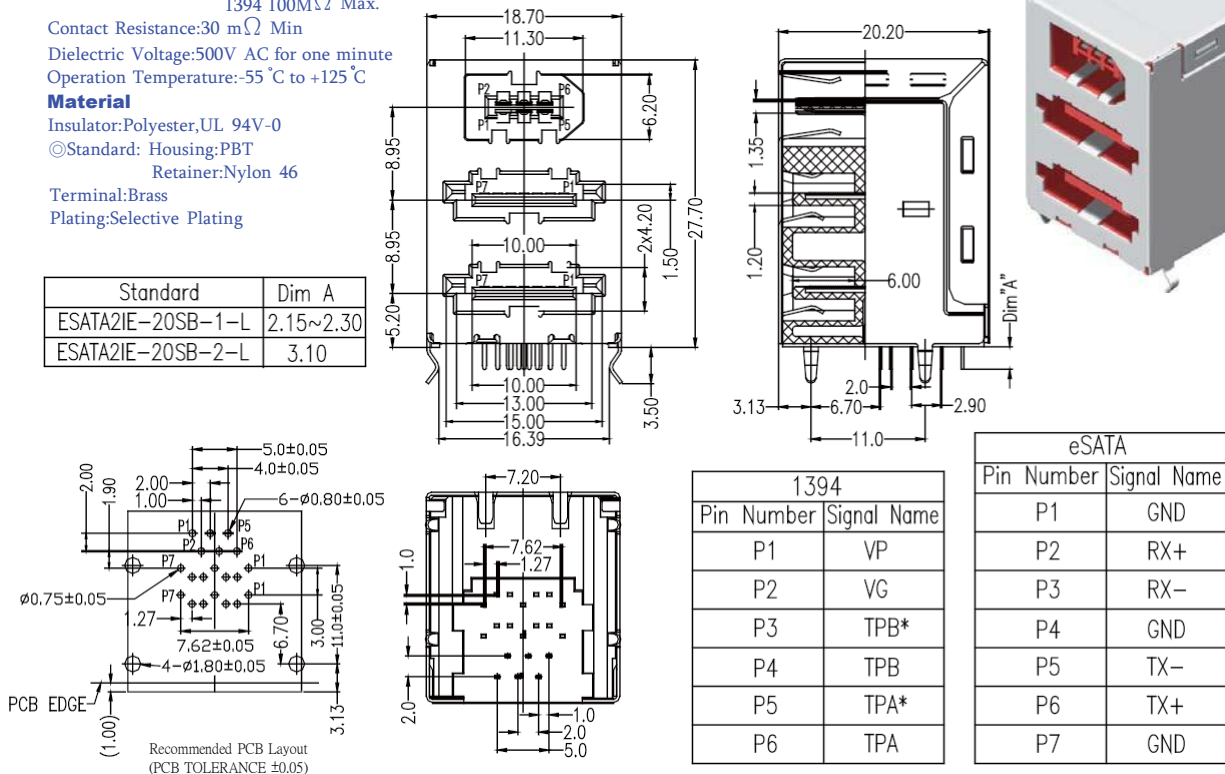
**Part No.:ESATAIE-13SR-U**

### Specifications

Current Rate:1.5 AMP  
Insulation Resistance:eSATA 1000M $\Omega$  Max.  
1394 100M $\Omega$  Max.  
Contact Resistance:30 m $\Omega$  Min  
Dielectric Voltage:500V AC for one minute  
Operation Temperature:-55 °C to +125 °C

### Material

Insulator:Polyester,UL 94V-0  
©Standard: Housing:PBT  
Retainer:Nylon 46  
Terminal:Brass  
Plating:Selective Plating



Standard	Dim A
ESATA2IE-20SB-1-L	2.15~2.30
ESATA2IE-20SB-2-L	3.10

1394	
Pin Number	Signal Name
P1	VP
P2	VG
P3	TPB*
P4	TPB
P5	TPA*
P6	TPA

eSATA	
Pin Number	Signal Name
P1	GND
P2	RX+
P3	RX-
P4	GND
P5	TX-
P6	TX+
P7	GND

**Part No.:ESATA2IE-20SB-L**