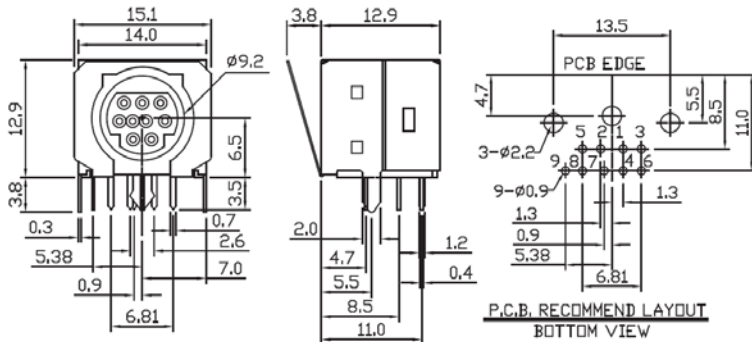


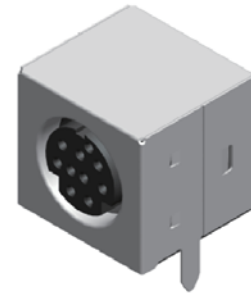
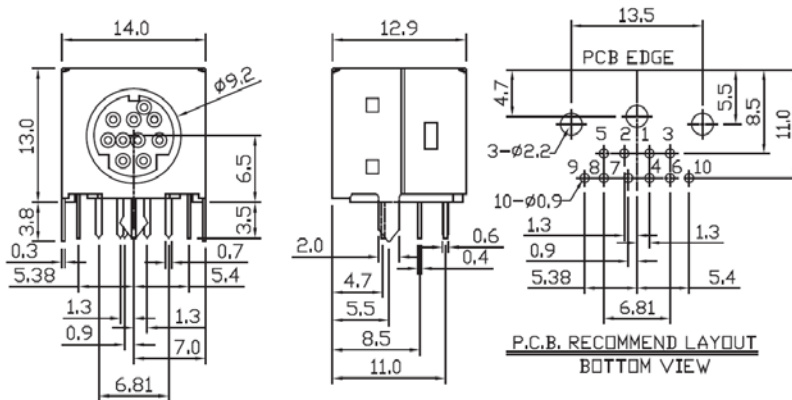
Mini Din Jack Shielded With Grounding 9Pin



Part No.:MDJ-508HS1-9S-L

No.	Name	Q'ty	Material	Remarks & Thickness	Finish
1	Housing	1	PBT G.F.		Black
2	Contact	9	Phos. Bronze T=0.2	Gold:1-3u",Ni:40-60u", Tin:120u"	Gold/Tin Plated
3	Shield	1	Brass T=0.3	Tin:120-200u"	Tin Plated
4	Bottom Cover	1	PBT G.F.		Black
5	Spring Shield	1	Stainless T=0.2		

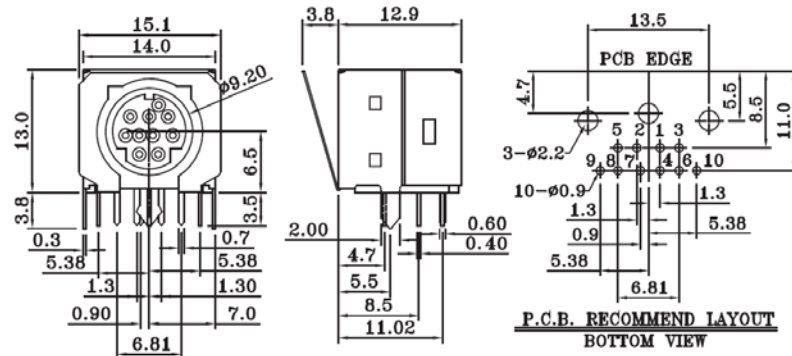
Mini Din Jack Shielded 10Pin



Part No.:MDJ-508H-10-L

No.	Name	Q'ty	Material	Remarks & Thickness	Finish
1	Housing	1	PBT G.F.		Black
2	Contact	8	Phos. Bronze T=0.2	Gold:1-3u",Ni:40-60u", Tin:120u"	Gold/Tin Plated
3	Shield	1	Brass T=0.3	Tin:120-200u"	Tin Plated
4	Bottom Cover	1	PBT G.F.		Black
5	Harpoon	2	Brass T=0.4	Gold:1-3u",Ni:40-60u", Tin:120u"	

Mini Din Jack Shielded With Grounding 10Pin



Part No.:MDJ-508HS1-10S-L

No.	Name	Q'ty	Material	Remarks & Thickness	Finish
1	Housing	1	PBT		Black
2	Contact	8	Phos. Bronze T=0.2	Ni:1-5u", Tin:3u", Gold:1-3u"	Gold/Tin Plated
3	Shield	1	Copper Alloy T=0.3	Tin/Lead:3-5u"	Tin/Lead Plated
4	Back Cover	1	PBT		Black
5	Harpoon	2	Brass T=0.4	Ni:1-5u", Tin:3u", Gold:1-3u"	Gold/Tin Plated
6	Spring Shield	1	Stainless		0.2 THK