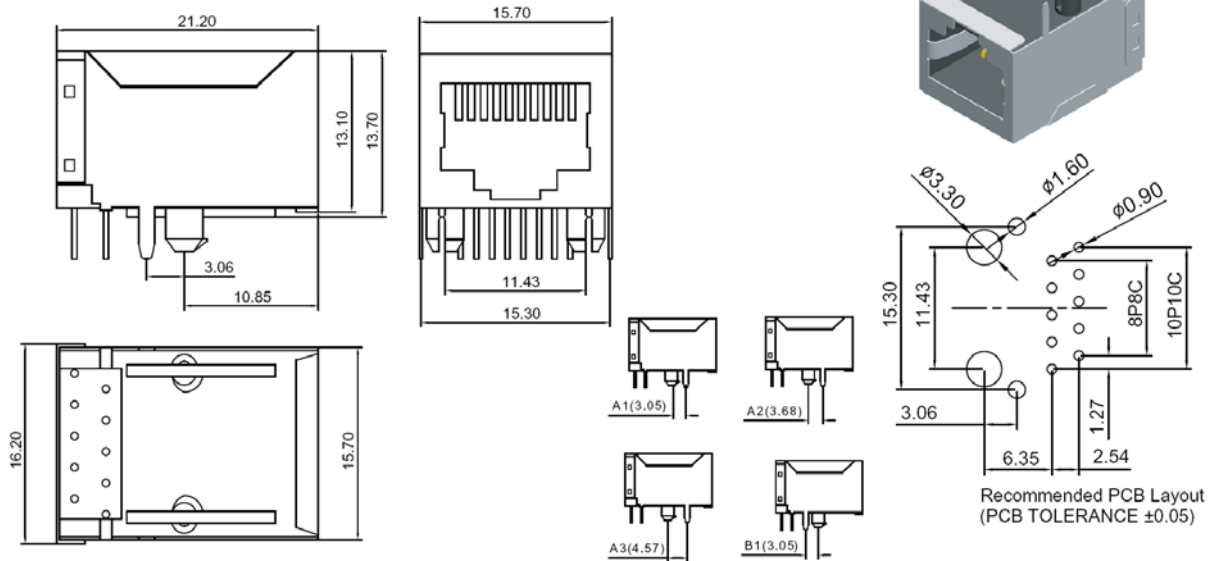


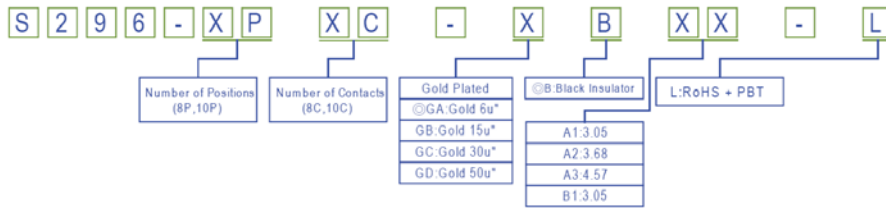
CONNECTORS MANUFACTURER

Modular Jack Shielded Side Entry H=13.1 W=21.20

Material & Finish:
 Housing: Glass Fiber, PBT, UL94V-0
 Contact: 0.35 mm Thickness Phosphor Bronze,
 Gold Plated Over Nickel on Contact Area,
 Tin Plated Over Nickel on Solder Area.

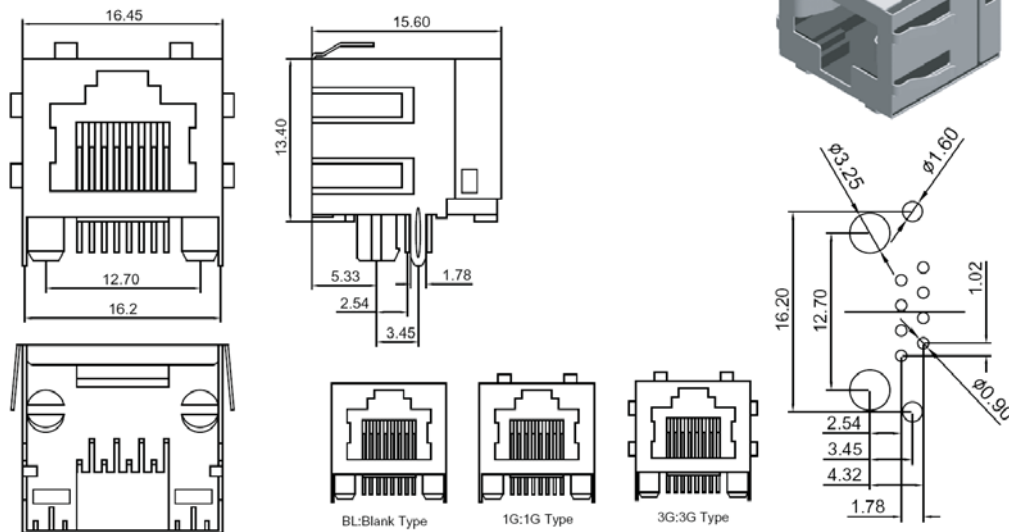


Order Information

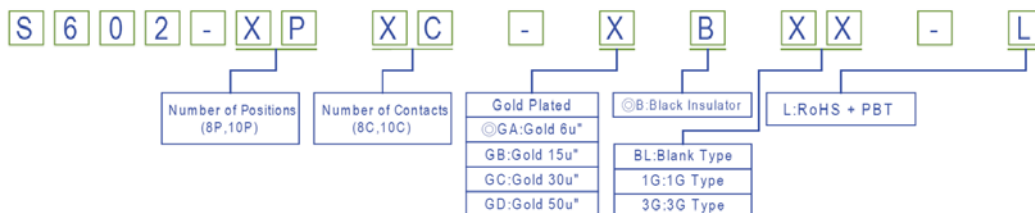


Modular Jack Shielded Side Entry H=13.4 W=15.6

Material & Finish:
 Housing: Glass Fiber, PBT, UL94V-0
 Contact: 0.35 mm Thickness Phosphor Bronze,
 Gold Plated Over Nickel on Contact Area,
 Tin Plated Over Nickel on Solder Area.



Order Information



Modular Jack



RoHS