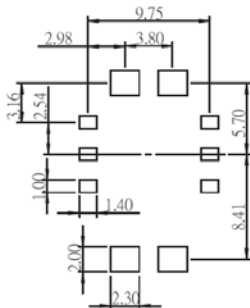


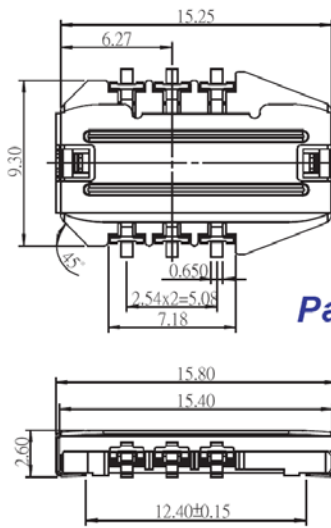
SIM Card Conn. Series

MATERIAL

Insulator Material: LCP, UL 94V-0
 Contact Material: Copper Alloy
 Finish: Gold Plating 15u"

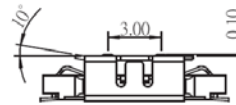
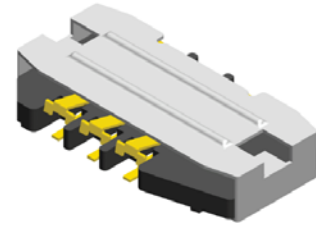


Recommended PCB Layout
 (PCB TOLERANCE ±0.05)



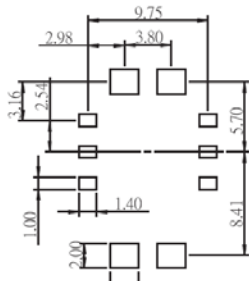
Part No.: SIMC0157-26 A 06GFB-U

26: Plastic Height H=2.6mm

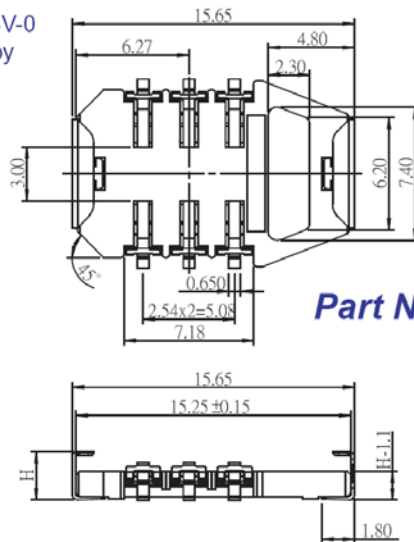


MATERIAL

Insulator Material: LCP, UL 94V-0
 Contact Material: Copper Alloy
 Finish: Gold Plating 15u"

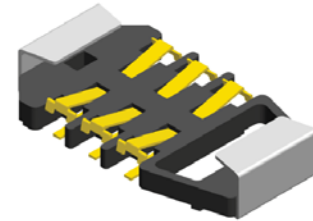


Recommended PCB Layout
 (PCB TOLERANCE ±0.05)



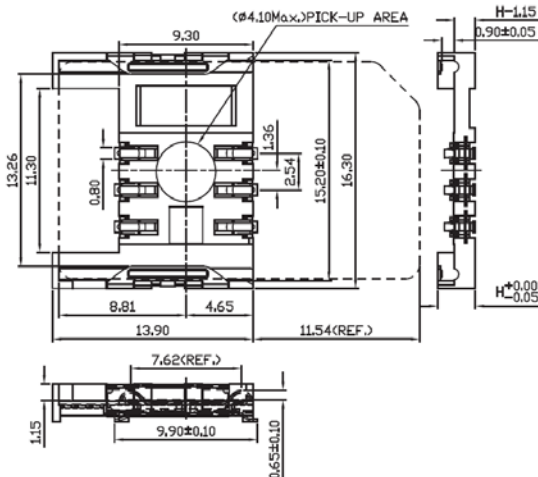
Part No.: SIMC0157- B06GFB-U

25: Plastic Height H=2.5mm
 27: Plastic Height H=2.7mm
 29: Plastic Height H=2.9mm
 31: Plastic Height H=3.1mm



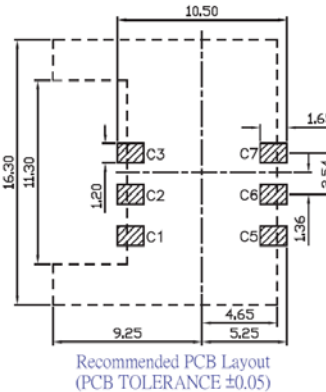
MATERIAL

Insulator Material: LCP, UL 94V-0
 Contact Material: Copper Alloy
 Finish: Gold Flash



Part No.: SIMC022- 06GB-U

22: Plastic Height H=2.2mm
 24: Plastic Height H=2.4mm
 26: Plastic Height H=2.6mm



Recommended PCB Layout
 (PCB TOLERANCE ±0.05)

