

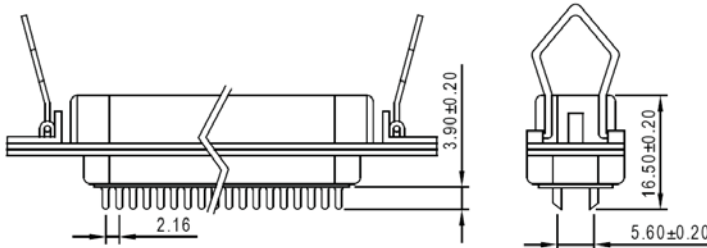
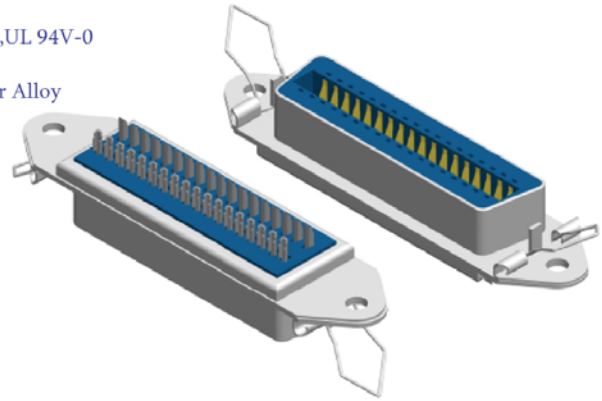
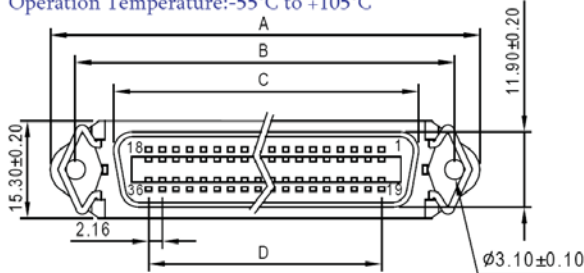
Centronic Solder Type

SPECIFICATION

Current Rate: 1 AMP
 Insulation Resistance: 1000MΩ Min.
 Contact Resistance: 30mΩ Max.
 Dielectric Voltage: 500V AC for one minute
 Operation Temperature: -55°C to +105°C

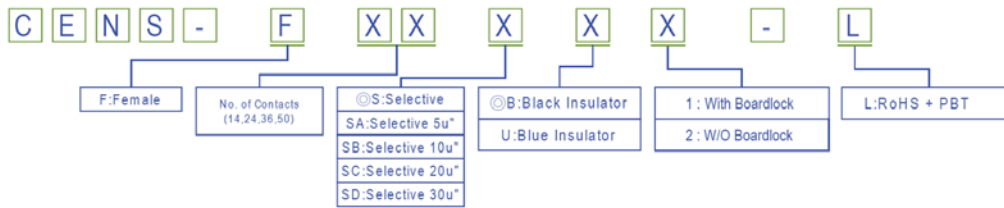
MATERIAL

Insulator: Polyester, UL 94V-0
 ◎Standard: PBT
 Contact Pin: Copper Alloy



Part No.	A±0.20	B±0.20	C±0.20	D±0.20
CENS-F14	43.90	35.99	25.20	12.96
CENS-F24	54.71	46.79	36.00	23.76
CENS-F36	67.69	59.74	48.90	36.72
CENS-F50	82.78	74.85	64.00	51.84

Order Information



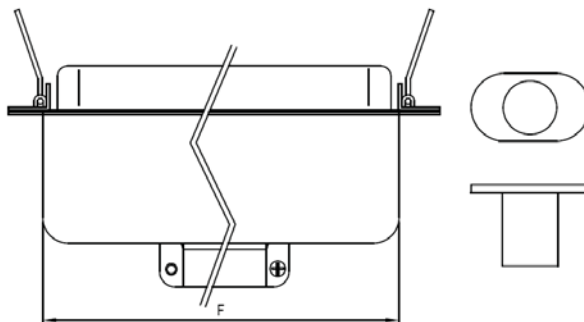
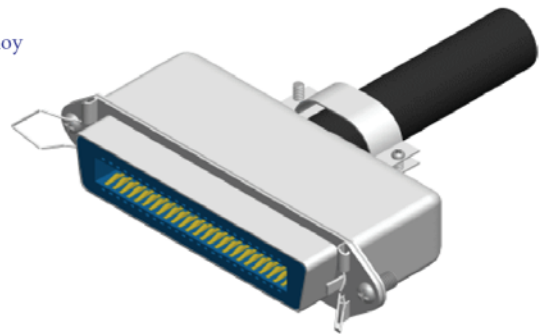
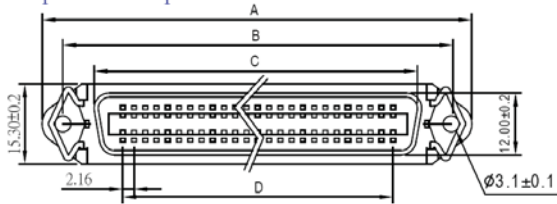
Centronic Solder Assembly Type

SPECIFICATION

Current Rate: 1 AMP
 Insulation Resistance: 1000MΩ Min.
 Contact Resistance: 30mΩ Max.
 Dielectric Voltage: 500V AC for one minute
 Operation Temperature: -55°C to +105°C

MATERIAL

Insulator: Polyester, UL 94V-0
 ◎Standard: PBT
 Contact Pin: Copper Alloy



Part No.	A±0.2	B±0.2	C±0.2	D±0.03	F±0.2
CENA-F14	43.92	35.99	25.20	12.96	29.00
CENA-F24	54.71	46.79	36.00	23.76	39.80
CENA-F36	67.69	59.74	48.90	36.72	53.00
CENA-F50	82.78	74.85	64.00	51.84	68.10

Order Information

