

# MICRO SWITCH

## Medium Micro Switch

**TOPTTEK®**  
HARDWARE ELECTRONIC COMPONENTS



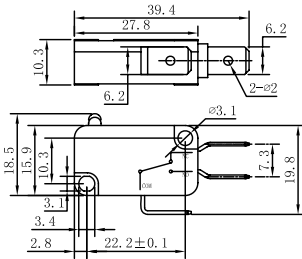
www.toptek-co.com

### Specifications

Rating: 3A 125V AC; 1.5A 250V AC Contact | Resistance: 20mΩ Max | Insulation Resistance: 500VDC 1000M Ω min | Dielectric Strength: 1000V AC for one minute | Operation Temperature: -25°C to +85°C | Electrical Life: ≥10,000 Cycles

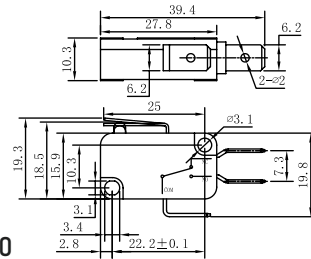


### MA-1



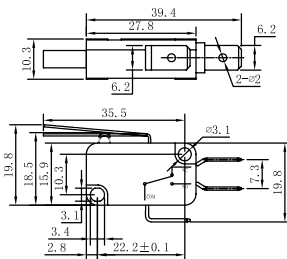
- MA1-103-Z1A100
- MA1-103-Z1A150
- MA1-103-Z1A200
- MA1-103-Z1A300

### MA-2



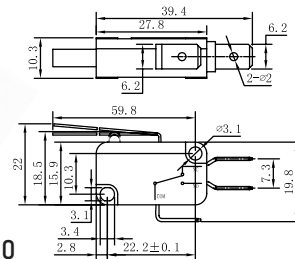
- MA2-103-Z2A100
- MA2-103-Z2A150
- MA2-103-Z2A200
- MA2-103-Z2A300

### MA-3



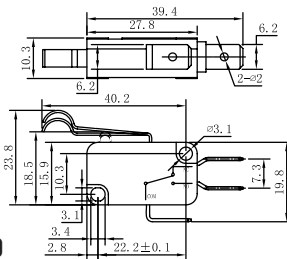
- MA3-103-Z3A100
- MA3-103-Z3A150
- MA3-103-Z3A200
- MA3-103-Z3A300

### MA-4



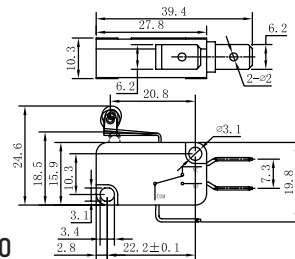
- MA4-103-Z4A100
- MA4-103-Z4A150
- MA4-103-Z4A200
- MA4-103-Z4A300

### MA-5



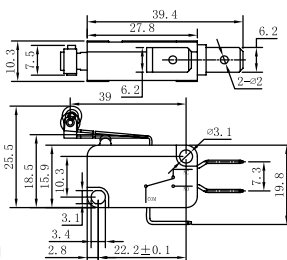
- MA5-103-Z5A100
- MA5-103-Z5A150
- MA5-103-Z5A200
- MA5-103-Z5A300

### MA-6



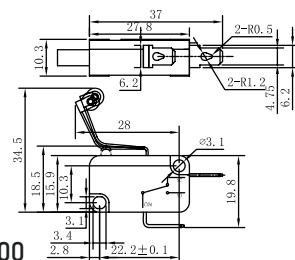
- MA6-103-Z6A100
- MA6-103-Z6A150
- MA6-103-Z6A200
- MA6-103-Z6A300

### MA-7



- MA7-103-Z7A100
- MA7-103-Z7A150
- MA7-103-Z7A200
- MA7-103-Z7A300

### MA-8



- MA8-103-D13B100
- MA8-103-D13B150
- MA8-103-D13B200
- MA8-103-D13B300