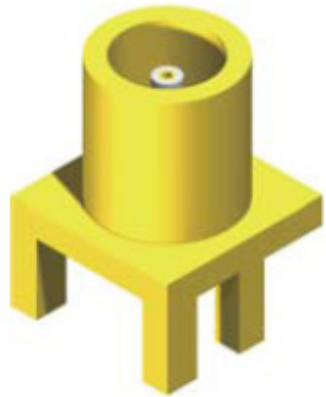


# MCX & MMCX Conn. Series

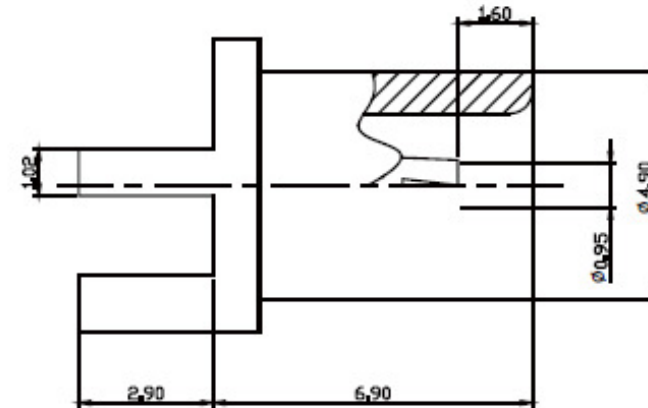
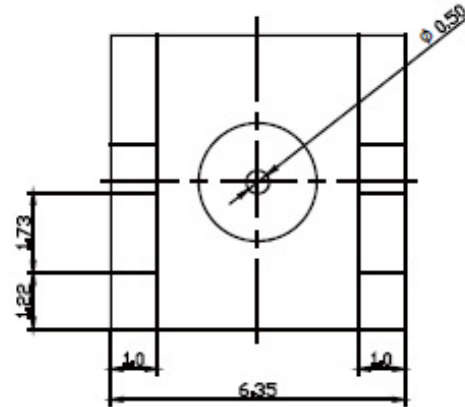


RoHS  
2002/95/EC



Part No.: MCX005-F  GW-L

5:50 Ω 7:75 Ω 



NO	DESCRIPTION	MATERIAL	FINISH	QTY
3	DIELECTRIC	TEFLON		1
2	PIN	BRASS	GOLD	1
1	BODY	BRASS	NICKEL	1

IMPEDANCE	50 OHM
FREQUENCY	0-6.0 GHz
DIELECTRIC WITHSTANDING VOLTAGE	1000 VRMS MIN
WORKING VOLTAGE	335 VRMS MAX.
INSULATION RESISTANCE	1000 MEGOHMS MIN
CONTACT RESISTANCE	
INNER CONDUCTOR	= 5.0 MILLIOHMS
OUTER CONDUCTOR	= 2.5 MILLIOHMS

**TOPTEK**  
HARDWARE ELECTRONIC COMPONENTS



www.toptek-co.com