

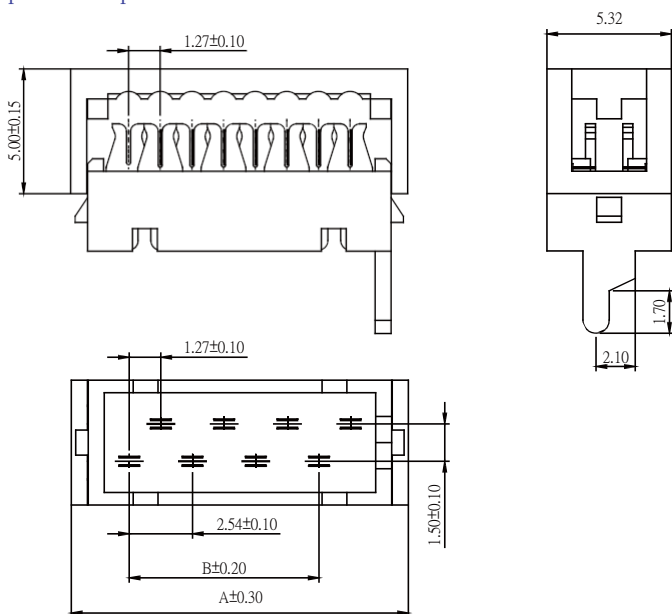
Mini Match Box Plug IDC Type

Specifications

Current Rate:1.0 AMP
Insulation Resistance:1000MΩ Min
Contact Resistance:20mΩ Max
Dielectric Voltage:500V AC for one minute
Operation Temperature:-40°C to +105°C

Material

Insulator:Polyester,UL 94V-0
Standard:P.B.T
Terminal:Copper Alloy



©Mate with flat cable Pitch 1.27 mm

No. of Contacts	Dim. A	Dim. B
4	8.45	2.54
6	10.99	5.08
8	13.53	7.62
10	16.07	10.16
12	18.61	12.70
14	21.15	15.24
16	23.69	17.78
18	26.23	20.32
20	28.77	22.86

Part No.:MIBPI3-XX-L

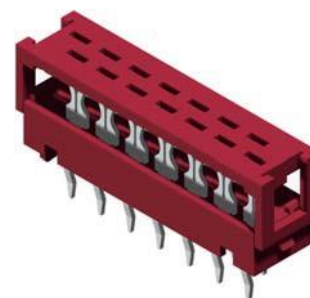
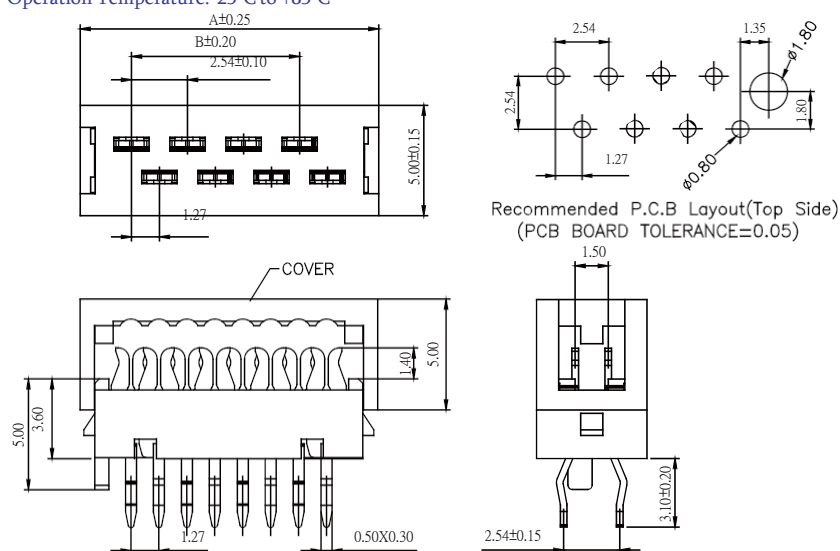
Mini Match Dip Plug IDC Type

Specifications

Current Rate:1 AMP
Insulation Resistance:1000MΩ Min
Contact Resistance:20mΩ Max
Dielectric Voltage:500V AC for one minute
Operation Temperature:-25°C to +85°C

Material

Insulator:Polyester,UL 94V-0
Standard:P.B.T
Terminal:Copper Alloy



©Mate with flat cable Pitch 1.27 mm

No. of Contacts	Dim. A	Dim. B
4	8.45	2.54
6	10.99	5.08
8	13.53	7.62
10	16.07	10.16
12	18.61	12.70
14	21.15	15.24
16	23.69	17.78
18	26.23	20.32
20	28.77	22.86

Part No.:MIDPI3-XX-L

ORDER INFORMATION

