

# PIN HEADER 2.54

Pin Header 2.54mm 1 Row H=2.5/1.7/1.5mm SMT Type

**TOPTTEK**<sup>®</sup>

HARDWARE ELECTRONIC COMPONENTS



www.toptek-co.com

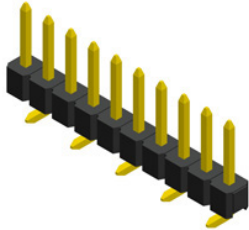


## Specifications

Current Rate: 3 AMP | Insulation Resistance: 1000MΩ | Min. Contact Resistance: 20mΩ | Max. Dielectric Voltage: 1000V AC for one minute | Operation Temperature: -40°C to +105°C

## Material

Insulator: Hi-Temp. Thermoplastic, UL 94V-0 | Terminal: Copper Alloy | Plating: Gold Plated

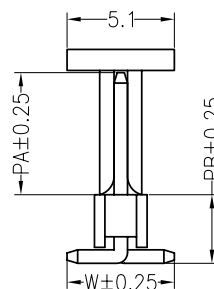
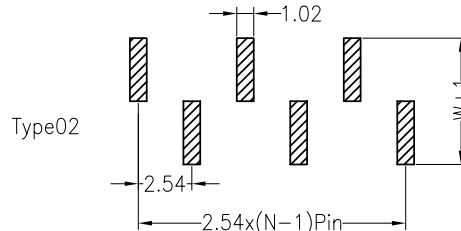
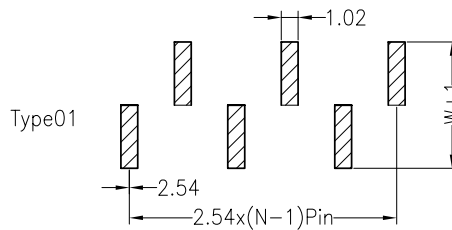
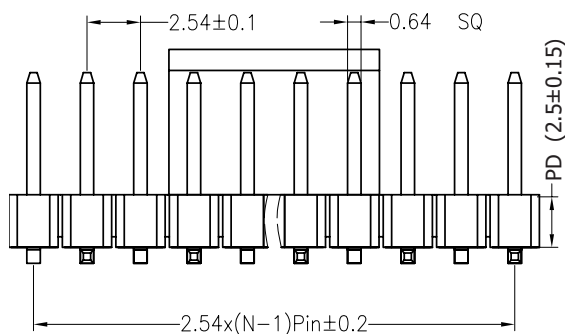
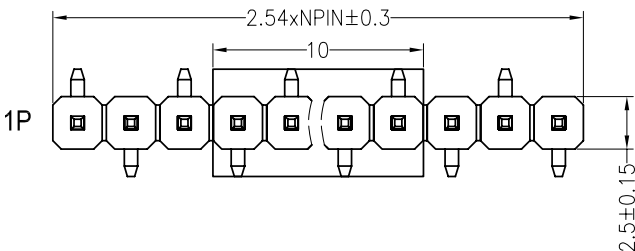
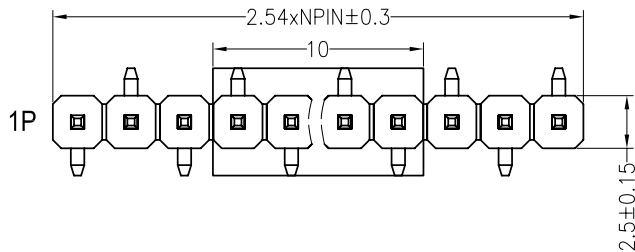


## ORDER INFORMATION

**P H 1 M 2 5 - 1 X X X N X X M PA/PB/W X**

- P**: PD  
25=2.5mm  
17=1.7mm  
15=1.5mm
- H**: No. of Pins  
Pr Row  
1x40
- 1**: Insulator Material Option  
A=BK-PBT  
B=BK-PA66  
C=BK-PA6T  
D=BKPA46  
F=BK-LCP
- M**: Contact Plating  
G0= Gold Flash  
G2= 5U" Gold  
G3= 10U" Gold  
G4= 15U" Gold  
G5= 30U" Gold  
S0= Gold Flash/Tin  
SN= Tin
- PA/PB/W**: Pin Length
- X**: Packing  
0=PE Bag  
A=Tray  
T=Tube  
P=Tube+Cap  
R=Reel+Cap

Recommended P.C.B Layout (Top Side)  
(PCB BOARD TOLERANCE ±0.05)



PD	PB
2.5mm	3.30mm
1.7mm	2.50mm
1.5mm	2.30mm

ITEM	PA	PB	W
Standard	6.00	3.30	5.00

Alternate