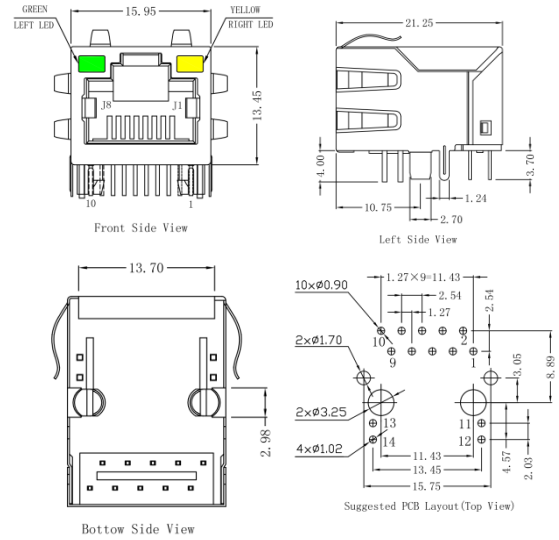


RJ45 Connector

302 - AENL



- RJ45 Connector with 100/1000 Base-T
- Integrated Magnetics
- Port: 1
- Dim: 21.5mm
- TAB-UP With LEDs

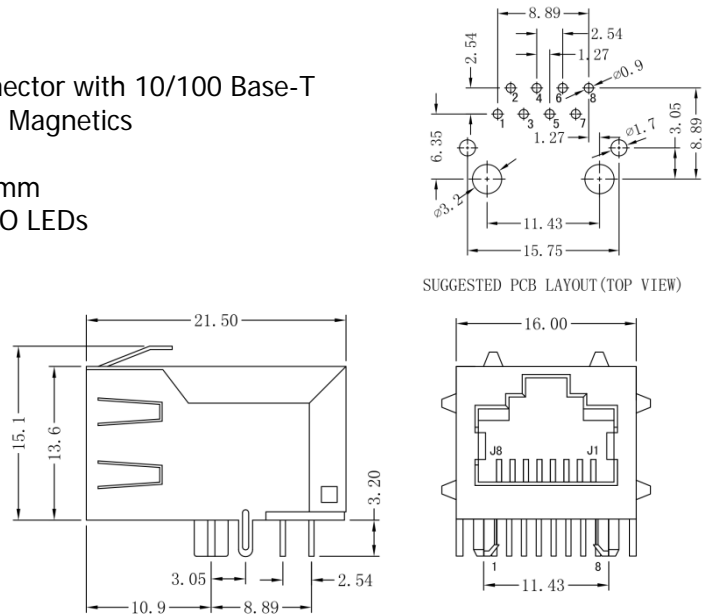


RJ45 Connector

64 - CNL



- RJ45 Connector with 10/100 Base-T
- Integrated Magnetics
- Port: 1
- Dim: 21.5mm
- TAB-UP WO LEDs



RJ45 Connector

140 - AGNL



- RJ45 Connector with 100/1000 Base-T
- Integrated Magnetics
- Port: 1
- Dim: 25.4mm
- TAB-UP With LEDs

