

S.ATA Conn. Series

Specifications

Current Rate:1.5 AMP
Insulation Resistance:1000M Ω Max
Contact Resistance:30 m Ω Min
Dielectric Voltage:500V AC for one minute
Operation Temperature:-55 °C to +125 °C

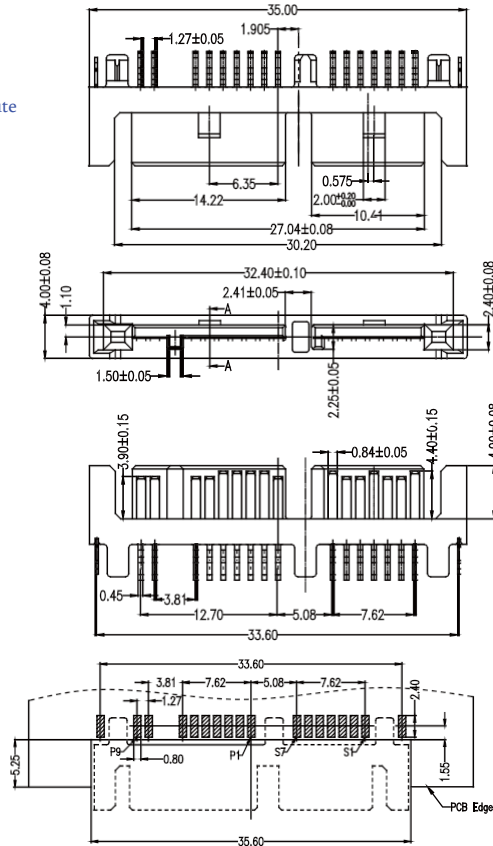
Material

Insulator:Polyester,UL 94V-0
©Standard:LCP
Terminal:Brass
Plating:Selective Plating

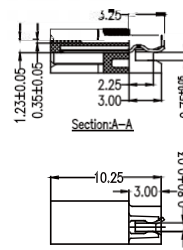
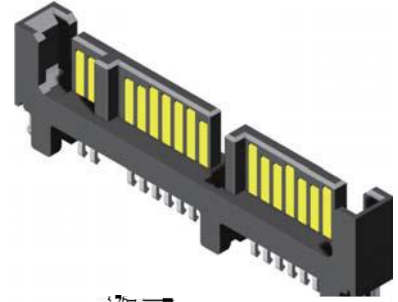
Serial ATA

Pin Number	Signal Name
S1	GND
S2	RX-
S3	RX-
S4	GND
S5	TX-
S6	TX+
S7	GND

Pin Number	Power Line Designation
P1	+3.3V
P2	-3.3V
P3	GND
P4	GND
P5	-5.5V
P6	+5.5V
P7	DAS/DSS
P8	Optional
P9	Optional



Recommended PCB Layout
(PCB TOLERANCE ± 0.05)



Specifications

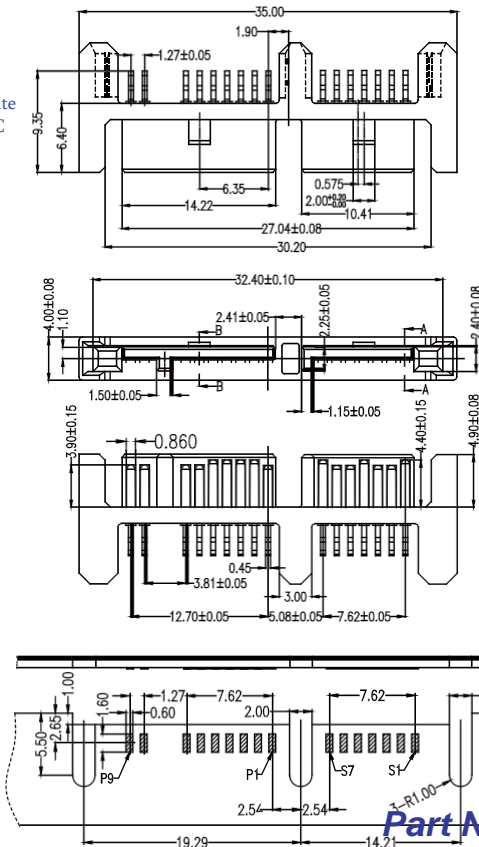
Current Rate:1.5 AMP
Insulation Resistance:1000M Ω Min
Contact Resistance:30 m Ω Max
Dielectric Voltage:500V AC for one minute
Operation Temperature:-55 °C to +125 °C

Material

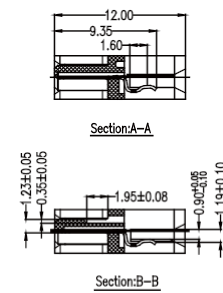
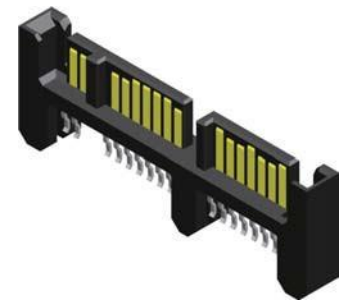
Insulator:Polyester,UL 94V-0
©Standard:LCP
Terminal:Brass
Plating:Selective Plating

Pin Number	Signal Name
S1	GND
S2	RX-
S3	RX-
S4	GND
S5	TX-
S6	TX-
S7	GND

Pin Number	Power Line Designation
P1	-3.3V
P2	-3.3V
P3	GND
P4	GND
P5	-5.5V
P6	-5.5V
P7	DAS/DSS
P8	Optional
P9	Optional



Recommended PCB Layout
(PCB TOLERANCE ± 0.05)



Part No.:SATAMR-M16SB-V4-U

Part No.:SATAMR-M16SB-V7-U